



6H ABU DHABI

22-23 January 2021



SPORTING & TECHNICAL REGULATIONS

Hankook 6H ABU DHABI

22-23 January 2021

VERSION 22.12.2020

Approved under EMSO permit No.: UAE-2021-001



Introduction

HANKOOK 6H ABU DHABI is a National status Club-level event with foreign participants at Yas Marina Circuit

And is organised in conformity with the provisions of the International Sporting Code and its appendices and under the National Sporting Code, Code of Conduct and Covid-19 Return to Race Guidelines of the EMSO (Emirates Motor Sports Organization).

It is the competitors' responsibility to follow these Sporting & Technical Regulations and the relevant Supplementary Regulations and any subsequent officially published bulletins.

HANKOOK 6H ABU DHABI offers an endurance race for amateur drivers and teams to do their hobby (racing for fun), with a wide variety of cars brands and models and based on technical respected regulations that suit amateur endurance competition.

Although both HANKOOK 6H ABU DHABI is basically for amateur drivers (AM), also semi- and even some professional drivers (PRO) are welcome. However, the PRO-drivers have to adapt to 6H ABU DHABI format, National Club-level event, and have to respect the amateur drivers on the track.

We aim to offer amateur teams and drivers to participate at a low budget and to offer an endurance race for amateur drivers to compete with other nationalities from all over the world.

Teams and drivers can participate with a wide variety of cars, like Touring cars, silhouette cars, GT-cars, sports cars and prototypes.

The race is not open for formula cars.

Drivers can participate with minimum a valid National race licence.

Competitors from outside UAE, must submit the authorization of their ASN (according Art. 3.9 ISC).

Note:

Although 6H Abu Dhabi is a National Club-level event with limited and simple regulations, for the convenience of regular 24H SERIES competitors, these regulations are derived from 24H SERIES regulations.

The article- and chapters-number which are not applicable or kept in these regulations with the note: not applicable.

Chapter I – Sporting Regulations

1. These regulations should be read as follows:

- Chapter I: Sporting Regulations (FOR ALL CLASSES)
- Chapter II: Not applicable
- Chapter III: Technical Regulations (FOR ALL CLASSES)
- Chapter IV: Technical Regulations (FOR GROUP "24H SPECIAL" CARS)
- Individual appendix with specific technical regulations for this class

2. General

This document describes the Sporting & Technical Regulations for the above mentioned 6H ABU DHABI endurance event.

Additionally Supplementary Regulations will be published for each event.

2.1 Sporting Authority (ASN)

Emirates Motorsports Organization (EMSO)

Al Wuheida Street,

P.O. Box 5078

Dubai, UAE

3. Status of the Event

6H ABU DHABI is registered as National Status event with foreign participants.

4. Promoter/Organiser

4.1 Promoter – Postal Address

Creventic International DWC LLC

DWC Business Center

1st Floor Dubai World Central

Dubai Logistics City

PO Box 390667

Dubai, U.A.E.

4.2 Promoter – Contacts

Phone: +31 (0)485-471166

E-Mail: info@creventic.com

Internet: www.creventic.com

4.3 Organiser

Yas Motor Racing Club (YMRC)

Yas Marina Circuit, Yas Island

P.O. Box 130001

Abu Dhabi, UAE

4.4 Insurance

The organiser of the event has concluded a third-party insurance, for all competitors, their team members and drivers.

Drivers taking part in the event are not third-parties with respect to one another.

5. Conditions

5.1 General Conditions

The promoter reserves the right to amend the approved Sporting & Technical Regulations with approval of ASN before the closing date of the event.

The promoter reserves the right to postpone, abandon, change (e.g. the duration, track or date) or cancel the meeting or any part thereof. The promoter alone, will in such case, make the decision about the consequences for the Event. In this event the competitor has no right to claim against the neither organiser nor promoter with respect of any loss or expense he may thereby incur.

The promoter may also offer other services, e.g. transportation of car and equipment. Related to above mentioned right to postpone, abandon, change or cancel the meeting or any part of it and in case of any delay or any other problems, damages or losses related to any of these services, the competitor has no right to claim against neither the organizer nor the promoter with respect of any loss or expense he may thereby incur.

In case of an appeal of any dispute leading to an appeal in connection with the organized events as described in these regulations, this will be subject to the exclusive jurisdiction of the ASN.

5.2 Specific Conditions

The event will be run in compliance with the following regulations to which all competitors submit them by the very fact of presenting the entry form:

- FIA International Sporting Code (ISC) and its appendices
- These Sporting & Technical regulations
- The Supplementary Regulations of the Event
- Decisions and provisions published by the EMSO
- Official Bulletins for the 6H ABU DHABI (EMSO)
- Official Event Bulletins during the specific event (Stewards)

5.3 Circuit conditions

Any cost of damages to circuit-properties, caused by the competitor, driver or any team member will be accounted to the competitor. E.g. damages of guardrail, fences, pit box, etc.

6. Organisation and officials

6.1 Organising Committee

The organising Committee will be appointed by the promoter (and published in the Supplementary Regulations)

6.2 Officials

The following permanent officials, who may have assistance, will be appointed by the promoter in cooperation with the organizer and published in the Supplementary Regulations

- Race director

Other officials: See Supplementary Regulations of the event.

7. Calendar and Timetable

7.1 Calendar

For the official actual calendar, visit www.24HSERIES.com.

7.2 Timetable:

See Supplementary Regulations of each event. See also www.24HSERIES.com

8. Competitors/Drivers/PRO/AM/Teams/Team managers

8.1 Competitors

8.1.1 Competitor licence

Any person or legal entity holding minimum a national competitor (or driver) licence.
Foreign competitors must submit the authorization of their ASN (see Art. 3.9 ISC)

According to International Sporting Code (art. 9.1 of ISC) if a team does not have a team competitor licence, the competitor will become the first driver in the entry form and entry list.

8.1.2 Competitor/Team manager

In every entry form, the Competitor must assign a Team Manager who, in his/her absence, shall assume all of his/her rights and obligations.

The Team Manager must be available throughout the event.

Amongst others, the Team Manager will be attributed the following tasks:

- To carry out the steps for Administrative Checks and scrutineering.
- To sign the acknowledgement of communications and sanctions.
- To attend the Team Managers' Briefing.
- The TEAM MANAGER is responsible to check and verify that all drivers have passed full clothing scrutineering and wearing the obligatory drivers equipment in this event as indicated in the regulations; see also article 14.3 and 15.11

In case a team manager does not fulfil his responsibilities, the competitor will receive penalty at discretion of the race director.

8.1.3 Change of drivers (during the event)

8.1.3.1 A change of driver may be made before the beginning of Qualifying and must be done in writing to the secretary of the event.

8.1.3.2 A change of driver during or after qualifying due to special circumstances must be requested to the race director in writing. At discretion of the race director, he can propose this driver change to the Stewards for approval.

8.2 Number of drivers per team

Each team of a car must be made up of **minimum 2** and **maximum 5 drivers**.

8.3 Maximum number of PRO drivers is 1 (one).

8.3.1 The promoter will determine if the driver category is PRO.

PRO is Gold or Platinum

8.4 Specific driving time requirements

There are no minimum or maximum driving time requirements for all classes.

8.5 Drivers Eligibility

8.5.1 The events will be open for any driver (minimum age 16 years) holding minimum a current and valid National race licence. Competitors from outside UAE, must submit the authorization of their ASN (according Art. 3.9 ISC).

8.5.2 The events will be open for any driver holding a current and valid International licence, minimum grade D or C. Competitors from outside UAE, must submit the authorization of their ASN (according Art. 3.9 ISC).

8.5.3 In case of an underage driver (younger than the age of 18 years) the Team/Entrant must submit a parents authorisation of their ASN, that must be handed over to the sporting checks.

8.6 Driver medical examination

The Race Director or the Stewards may require a driver to have a medical examination by the chief medical officer. In case of an unfavourable medical result they may refuse the participation in any practice and/or race of the driver concerned.

9. Entries and Entry Confirmation

9.1 Entries

9.1.1 The opening date and closing dates of the specific event will be published in the Supplementary Regulations of the specific event.

9.1.2 Entry applications must be submitted on the official entry form. The entry form including its appendices must be duly completed in order to be accepted. All required declarations, in particular concerning the technical modifications carried out on the race car, must be made.

9.1.3 Any entry for which the entry and other fees (i.e. additional service space) have not been paid until the entry closing date will not be accepted.

9.1.4 Competitors are themselves responsible to present a proof of the payment.

9.1.5 According ISC 3.14.1: The promoter reserves the right to reject an entry under specification of the reason before the closing date of the event. If a competitor has applied for a full season entry, the promoter has the right to terminate this automatic entry for the remaining or single events.

9.1.6 Entries made by telephone are invalid and cannot be accepted. Only entries in written form are accepted.

9.1.7 All entries must be signed by the competitor (Team manager) and all drivers. If a driver is replaced by another driver, the competitor is responsible that the new driver signs the entry form (Yellow Control Card.)

9.1.8 Change of class or group of a competitor after the entry closing date is only possible by the Organising Committee that will propose this change by the Stewards for judgement and approval.

9.2 Entry Confirmation

All accepted entries will be confirmed in writing (entry confirmation). With the entry confirmation, the competitor and the promoter enter into a contract. This contract compels the competitor to take part in the competition under the conditions published in these Regulations.

10. Entry Fees, Additional Costs and Fees

10.1 Individual Entry fee reduced by the promoter's sponsors

The promoter has contracts with sponsors and/or tyre suppliers who contribute to the individual entry fees if an advertising space on the competition car is provided. See Article 13 for additional information about the obligatory advertising.

10.2 Additional costs and fees

10.2.1 Any amendment in the entry form concerning the car and/or the team announced (including driver change) after the entry closing date: Administrative charges apply, according to the entry form of the specific event

10.2.2 Entry request for paddock space (e.g. for hospitality tents, mobile home, or service vehicle)
Possibilities and prices on written request and/or entry form (preferable together with the entry form).
The allocation of spaces will be made on "first ask first serve" basis according to available place and exclusively after the promoter approval. Competitors cannot raise any claim on additional spaces or the admission of service vehicles with excessive dimensions.
Additional specifications in this context are published in Article 20 – Paddock Organisation.

10.3 Entry Fees, Additional Costs and Fees – Payment

10.3.1 The entry fees and the additional costs and fees must be transferred in € (Euro's) to the following account:
See www.24HSERIES.com
Do not forget to mention: "Name of Event or Country of the race and TEAM NAME" in the payment details.

10.3.2 Entry fee, incomplete

Any entry for which the entry fees have not been received until the entry closing date or for which the entry fees including all additional costs and fees have not been paid completely are regarded null and void and will be returned to the sender

10.3.3 Payments during the event

Any payment which has to be made on-site or any subsequent charges must be made in cash. Cheques submitted on-site will not be accepted!
For all those charges, which must be paid cash, a notification will be published during the event, which nominates the equivalent in local currency.

10.4 Entry Fee – Reimbursement

The entry fees will only be refunded in the following two cases:

- Refusal of the entry,
- Withdrawal of the entry with foundation for a 'good reason' (at discretion of the promoter) before the entry closing date – reimbursement of the total entry fees paid.

If the entry is withdrawn after the entry closing date, there is no claim to the refund of the entry fee.

11. Provisional Entry List

All accepted and approved entries regularly received by the promoter along with payment of the complete entry fee will be shown on the **provisional** entry list.

12. Entry Closing Date

Entry closing date will be stated on the entry form of the specific event and in the Supplementary Regulations of the event.

13. Marketing, TV, Compulsory Advertising and Merchandising

13.1 Advertising / Promotion

The promoter is the owner of all the advertising rights, TV rights, Internet rights, Merchandising rights and all other Intellectual Property rights regarding the event.

The promoter reserves the right to vest single components of the marketing rights or the exclusive marketing rights to a partner.

Promotion during the event in any kind (e.g. tyre brand) without written approval of the promoter is strictly forbidden.

Any inappropriate advertising (at discretion of the promoter) is strictly forbidden. Unless explicitly otherwise stated in the Supplementary Regulations or with written approval by the promoter.

13.2 Compulsory advertising

13.2.1 Description of the compulsory advertising to be affixed on the race cars:

- Competition number panels on the front doors, 56 cm x 56 cm large, XXXXXX below the race numbers, XXXXX above and XXXX on the left side of the race numbers.
- Small competition numbers on the front windscreen and rear window, up to 20cm high
- Upper windscreen streamer XXXXXX, up to 20 cm high
- Upper rear window streamer XXXXX, up to 20 cm high
- Front and rear registration plate area XXXXX, 40x10 cm large
- Front left and right mudguards XXXXX, 40 x 15 cm large
- Rear left and right mudguards XXXXX, 40 x 10cm large
- Any other advertising, published separately

13.2.2 Failure to comply with the compulsory advertising instructions may lead to non-admission to the start and/or can be penalized.

14. Administrative Checks

14.1 Initial event checks

Prior to the beginning of free practice, the competitors' and race cars' documents will be checked. Each competitor is solely responsible to have passed administrative checks and scrutineering before free practice. These and following checks may also be executed digitally.

14.2 Administrative Checks will take place in the Race Administration where the following documents must be presented:

- Competitors and all drivers current and valid licences
- Competitor and all drivers must have their passport available for verification.
- ASN approval for foreign competitors and drivers

14.3 ENTRY FORM

At the WELCOME Centre / Race Administration, each team will receive a control card, which must be submitted at all points (as for example Administrative Checks, Scrutineering etc.) for registration.

At the WELCOME Centre / Race Administration, the ENTRY FORM of each team will be checked and must be submitted at all points (as for example Administrative Checks, Scrutineering etc.) for registration.

15. Scrutineering

Cars must comply with their respective homologation papers and meet essential safety standards set by the regulations during the Event. Presenting the car at scrutineering will be deemed an implicit statement of the conformity of the car.

- Compliance with the Technical Regulations applicable for the car (Present Appendix J, FIA Prescriptions)
- These Technical Regulations, its Appendices and Bulletins
- The car must not damage the image of automobile sports according to promoter
- The car must not damage the reputation of automobile sports relating to their presentation according to promoter

15.1 Location

Scrutineering will take place in the scrutineering area/garage for the exact location see Supplementary Regulations.

15.2 Sticker lane

A so-called sticker lane will be placed in front of the scrutineering to check whether the compulsory stickers (advertising and reflective stickers) have been affixed in accordance with the given instructions.

15.3 Required items at scrutineering

Overview of required items which need to be present/operational at scrutineering
Unless otherwise stated in the Supplementary Regulations of the specific event.

Item	Obligatory ?	See Sporting & Technical Regulations	Remarks
Start numbers	Yes	art. 5.1 Chapter III	Provided by the promoter
Compulsory advertising	Yes	art. 13	Provided by the promoter
Transponder with or without driver-ID	Yes	art. 5.2 Chapter III	
The roll cage certificate	Yes		Valid roll cage certificate (if applicable)
The FIA-safety tank certificate	Yes		FIA-safety tank certificate
Homologation papers	Yes		Homologation papers (if applicable)

15.4 Empty tank prior to scrutineering

The following compulsory rules apply when cars are presented at their initial scrutineering.

15.4.1 The car needs to be presented with an empty fuel tank (less than 2 litres). Not complying with this rule, will be reported to the Race Director who may impose a penalty at his discretion.

15.4.2 To empty the fuel tank of the car the car has to be moved to the refuelling area. Only at the refuelling area it is allowed to empty the fuel tank and dispose the fuel into (team owns) steal jerry cans/drums up to 50Kg. Before or during the first free practice sessions this fuel can be refuelled into the car again in the refuelling area in full compliance with the applicable refuelling regulations.

15.5 TC-Approved and Final Sticker

15.5.1 TC-Approved Sticker

All cars will receive a "TC-approved" sticker after having successfully passed scrutineering. This scrutineering-sticker must be placed at the top left of the front-windscreen. Any car failing to display the scrutineering sticker will not be admitted to any practice or to race.

15.5.2 Final Sticker

Each team will receive a "FINAL" sticker after having successfully passed administrative checks. This FINAL-sticker must be placed at the top left of the front-windscreen. Any car failing to display the "FINAL or TC-Approved sticker will not be admitted to any practice or to race.

- 15.6 Repairs after Scrutineering**
Any car which - after having passed scrutineering - is seriously damaged must be re-presented to the scrutineers after repair and be approved in order to be allowed to continue in any practice or race. Competitors and drivers are themselves responsible for presenting the car concerned on their own accord.
- 15.7 Re-admission after accident damage**
The Race Director will decide about a possible re-admission after serious damage.
- 15.8 Cars presenting potential danger**
Any car in the Event that is presenting a potential danger must be stopped for repairs at their garage. If the car is on track a 'Black flag with orange disc' is shown to the driver at start/finish line according FIA appendix H, 2.4.4.1.e. the car may not re-join without approval from the Race Director.
- 15.9 Checks during the event**
The Race Director or Stewards reserve the right to carry out technical checks at any time during the event, in particular in relation to the compliance of the race car with the Technical Regulations. The teams must give any kind of support (car pass or equivalent documents, data sheets, dates, competent team members, mechanics, tools, other necessary and useful material, etc.) to the race director/scrutineers so that these checks may be carried out as quickly as possible
- 15.10 Ride Height (measuring location)**
- 15.10.1** For cars/classes where it is applicable the ride height will be measured at an assigned (fixed) location in the scrutineering area.
For all competitors, to determine their reference ride height, the assigned location is available for teams.
- 15.10.2** Any failure to comply with the minimum ride height may result in the penalties as described in art. 41 of this chapter.
- 15.11 Drivers' equipment, clothing, helmets and Frontal Head Restraint (FHR) system**
- 15.11.1** Drivers' clothing is an important safety item at Creventic events. It is explicitly expressed that it is the responsibility of the competitor and/or drivers of having and wearing the obligatory drivers' equipment as indicated in these regulations throughout the event.
- 15.11.2** For all drivers:
- Each driver has to declare explicitly - by signature - that he/she is having and will be wearing the appropriate and obligatory drivers' equipment throughout the event.
- 15.11.3** In case a driver is using several overalls and helmets during an event, as well as any other race clothing, this also needs to be put on above declaration.
- 15.11.4** All articles of clothing can be checked by officials at all times during the event.
- 15.11.5** The Race Director has the right to re-check all articles of clothing of each individual driver to determine it meets the requirements as indicated in the regulations.
- 15.11.6** Drivers taking part in the event must wear the complete fireproof outfit (suit, balaclava, gloves, underwear, socks and shoes), homologated according to the current ISC Appendix L.
- Note to art.1.4 (Appendix L Chapter III) Drivers' Equipment / Maximum weight and communication systems:
This article is interpreted as: it is not allowed to mount radio speakers (earplug-type transducers are allowed) into any helmet which is not originally equipped with a radio-speaker by the helmet manufacturer. So a FIA-approved helmet with radio speakers mounted by the manufactures on the FIA-list is allowed.
- 15.11.7** An arm restraint according to SFI 3.3 specification is allowed if there is no approved window net fitted according to current ISC Appendix J Article 253.11. See also Chapter III, Art. 3.1
- 15.11.8** Frontal Head Restraint (FHR) system is compulsory.
- 15.11.9** All components including the helmet must comply with the regulations and the FIA technical lists.

16. Weighing and Weights

- 16.1** All cars will be weighed at scrutineering. This weight determined for the car will be recorded and registered on the control card.

Weighing of the cars will be done at the available and assigned weighing equipment (e.g. circuit weighing equipment or the promoter's weighing equipment).

The weight measured (displayed) on this weight-scale is the applicable reference weight for the complete event.

For all competitors, to determine their reference weight, the assigned weighing equipment (weight-scale) is available for teams.

- 16.2** At all times during the event, the cars must comply with this minimum weight.
A tolerance of 2kg will be considered when determining the minimum weight.
- 16.3** The cars may be weighed during any practice, qualifying and race at discretion and/or request of Race Director or Stewards, in consultation with chief scrutineer.
Possibly lost time and/or differences of lost time between teams as a result of weighing will not be compensated.
- 16.4** Any failure to comply with the minimum weight will be reported to the Race Director and will be penalized as described in art. 41 of this chapter.

17. Cars' Identification Marks and Personal Passes

- 17.1** Upon presentation of the original entry confirmation, all the personal and car passes to which the competitor is entitled will be issued at the Welcome Centre upon confirmation by signature. The competitor himself is responsible that any drivers, mechanics or other team members arriving later will receive their personal- and car passes.

- 17.2** Car passes will be issued to be admitted to the paddock
These passes must be affixed to the interior of the front windscreen.
The number of admitted team cars in form of motorbikes/ quads is restricted to 2 per team.
The vehicle passes issued for these vehicles must be clearly affixed to the motorbike/ quad.
A parking space for motorbikes/ quads will be established in the area of the start and finish building. Any motorbike/quad failing to display the corresponding vehicle pass will be removed by the promoter.
Any vehicle failing to display the proper car-pass will not be admitted. Two-wheel vehicles (motorbikes/quads) failing to carry the proper pass may be confiscated by the promoter until the end of the event.

- 17.3** The competitors of the Race will receive: (unless otherwise described in the Supplementary Regulations)
- 10 team member tickets
 - 5 Drivers' tickets
 - 1 pass for race truck on the paddock
 - 1 car pass for support vehicle/passenger car on the paddock
 - 3 car passes for the team parking place (not for the paddock)

18. Eligible Cars, Divisions and Division into Classes

18.1 Eligible Cars

18.1.1 Vehicles using Unleaded 98 (EURO-SUPER) or DIESEL fuel will be admitted.
Also special Cup Cars might be admitted by the promoter. Each special cup will have their separate class.
The promoter will decide upon possible waivers.

18.1.2 Not applicable

18.2 Not applicable NoNot applicableNot applicable
Not applicable

18.3 Division into Classes

The promoter keeps the right to add additional race classes at his discretion, after approval of the ASN, before the closing date of the event.

In case of this implementation, the classes and their related regulations will be described in the Supplementary Regulations of the specific event.

During an event the promoter may add additional race classes upon approval by the race director and stewards.

18.3.1 The eligible cars are divided into the following classes:
If a certain car does not belong in a class to the judgement of the promoter, this car can be put in the most suitable class.

The specific technical regulations per class can be found in separate appendices, see table below.

18.3.2 Classes:

Class	Description	Technical Regulations	Class names in 24H SERIES
PX	Prototype cars: <ul style="list-style-type: none"> Production sports cars, FIA group CN cars Prototype cars according FIA Art. 277 Category II-SC (e.g. Wolf GB08, Ligier JS P3, Ligies JS51 etc.) 	Appendix 11	N/A
GT	<ul style="list-style-type: none"> GT3 cars special cars, close to GT3 cars 	Appendix 10	GT & GTX
991	Porsche Cup 991 <ul style="list-style-type: none"> Porsche 991-I Cup Cars Porsche 991-II Cup Cars 	Appendix 9	991
TG	<ul style="list-style-type: none"> GT4 cars TCR cars and 2000cc Turbo cars (e.g. TCR) special touring cars close to TCR 	Appendix 3	GT4, TCR & TCX
TC	<ul style="list-style-type: none"> Touring Cars (close to production) (e.g. BMW M240i, Renault Clio, etc.) 	Appendix 1	TC

19. Class Amalgamations

19.1 There is No Amalgamation of classes

20. Event Rules of Conduct

- 20.1** The allocation of spaces by the promoter is binding.
There is no claim on a special paddock area. Access and allocation of areas will be made upon instruction of the officials, their instructions must be strictly respected.
- 20.2** In the paddocks, some space is available for each team. This is included in the entry fee.
- 20.3** If space permits, the teams may rent additional paddock space (e.g. for an extra vehicle, tents, mobile homes or caravans). The fees for the additional space may apply.
- 20.4** Any storage of material, vehicles (including motorbikes and quads), bicycles etc. in the area of rescue escape routes are prohibited. The promoter reserves the right to assign a "Free" Walking zone directly behind the pit boxes.
- 20.5** All team members are obliged to respect the house rules of the circuit during the entire event.
- 20.6** All damages will be invoiced to the person or team that caused it.
- 20.7** Any team failing to respect these conditions / prescriptions mentioned in art. 20 may be penalized by the Race Director or the Race Director brings the non-compliance for the panel of Stewards for a penalty at their discretion.
- 20.8** The competitor shall be responsible for all acts or omissions on the part of any person taking part in, or providing a service in connection with, a competition or a championship on their behalf, including in particular their employees, direct or indirect, the drivers, mechanic, consultants, service providers, or passengers, as well as any person to whom the competitor has allowed access to the reserved areas.



EMSO

21. Pits, Refuelling, Pit Stops, Racing Services

21.1 Pits and pit regulations

21.1.1 Pit Allocation:

The promoter will make the pit allocation.

Each pit will be shared by several teams/cars.

If there is availability at the Circuit, there is the chance to book the option of using a pit garage exclusively.

Applications for teams wishing to share a pit must be submitted together with the entry form.

21.1.2 Pit regulations

21.1.2.1 It is not allowed to smoke or use open fire in the pit boxes, in the pit lane and on the roof of the pit building.

21.1.2.2 The pit lane has been divided into lanes. The lane closest to the pit wall/track is designated the 'fast lane' and the lane closest to the pit boxes is designated the 'inner lane' or 'working lane' and is the only area where any work can be carried out on a car, except in the situation mentioned in art 21.2.1.

The corridor (Safety-lane) between the fast lane and the working lane may only be crossed to go to and come from the working lane.

21.1.2.3 A car may enter or remain in the fast lane only with the driver sitting in the car behind the steering wheel in his normal position, even when the car is being pushed.

21.1.2.4 Any change of drivers and working on the car may only take place in the working area in front of the pit box assigned to the team.

21.1.2.5 Team members must remain inside the pits garage and not unnecessary in the pit lane area when the car is not in the pit lane.

21.1.2.6 Every driver changes, pit stop, refuelling operation and (time) penalty must be administered by the team. For this purpose, the organization will provide so called YELLOW PIT CARDS. It is the responsibility of the team manager that those Yellow Pit Cards are filled in correctly. So the Race Director and/or officials can easily verify at any moment the correctness of the pit stop/refuelling administration.

21.2 Pit Stops

21.2.1 Service and repairs on the cars may only be carried out in the pit lane. (Please also note art. 21.2.4 is applicable) Refuelling in and at the pit box and pit lane is absolutely prohibited, during the whole event.

Pit stops must be carried out in the working lane (not in the pit box)

Only longer repairs (e.g. damage/engine change) are allowed to be performed inside of the pit box (at discretion of race director). A pitstop with, driver change and/or tyre change and/or brake pads/discs change is NOT considered as a "longer repair".

21.2.2 Team members are only allowed in the working area just before car enters the pit lane. All tools, spare parts and related elements must be in the garage and not in the pit lane area. These items may be placed in the working lane just before the car enters the pit lane. After the pit stop the team must evacuate and clear the working area as soon as the work is finished.

21.2.3 The engines of all cars must be stopped during a pit stop.

21.2.4 If any service or repair must be carried out in the pit-box, the car may NOT enter the pit box under the power of its engine or momentum. The car must stop before its pit box and must be pushed into the pit box by maximum 4 mechanics/team members all wearing the appropriate vest.

When a race car leaves the pit-box after a service or a repair, the car must be pushed out of the pit-box by the team members.

- 21.2.5** On ground of safety it is not permitted to undo or loosen safety belts or remove articles of driver equipment while entering the pit lane. Only when the vehicle has stopped at its designated place, the driver may remove the safety harness and race protection equipment.

A maximum of two (2) people may work on or examine the vehicle simultaneously.

These TWO (2) people must be the same each pit stop procedure and cannot be changed during the pit stop by anyone else. Nobody may assist the two (2) people that work on the car in any way. Any help can be penalised as "Working with more than two (2) people on the car" (E.g. handing over tools or parts is not allowed).

Extra there can be a lollipop man who can also be a windshield washer.

The driver coming out of the car is allowed to help the driver entering the car and fixing the seat belt.

Also another team member (Driver assist) is allowed to help the driver entering the car and fixing the seat belt.

The lollipop man is only allowed to hold the lollipop and to work as windshield washer to wash the windows and lights. However he has to keep the lollipop in his hands. So he is not allowed to drop down the lollipop in the working area.

On ground of safety it is not permitted to undo or loosen safety belts or remove articles of driver equipment while entering the pit lane. Only when the vehicle has stopped at its designated place, the driver may remove the safety harness and race protection equipment.

- 21.2.6** Team members in the pit lane and on the pit-wall must be in possession of the proper passes.

- 21.2.7** Not applicable

- 21.2.8** Welding and grinding may only be carried out in the area of the Paddock. In any case an assistant with a fire extinguisher must be on stand-by. Please take adequate measures to work safely.

- 21.2.9** Pneumatic systems for wheel replacement may be placed in front of the pits but only on condition that neither the pit doors nor other cars will be obstructed.

21.2.10 Pit Signals

- 21.2.10.1** All the openings in the fence above the pit wall must be kept free. It must be possible for each pit team to give signals to their drivers.

21.3 Fuel / Refuelling

21.3.1 Fuel

21.3.1.1 To take part in any practices, qualifying and the race it is compulsory to use the fuel provided by the promoter. Any modification of the prescribed fuel is prohibited. No substances may be added, removed or changed in their concentration. Any mixture with other fuel is prohibited.

21.3.1.2 There will be a central fuel station with standard commercial fuel pumps with minimum:

- Min. 2 Petrol pump units (with 2 pistols each) (Octane 98)
- Min. 1 Diesel pump (if applicable)

The location of the fuel pumps will be mentioned in the Supplementary Regulations

21.3.2 Fuel-inlet

21.3.2.1 All vehicles must be able to refuel directly with a commercial type hose as used in usual service stations.

21.3.2.2 The refuelling orifices of the tanks must be equipped for this operation.

These orifices must be easily accessible manually with the fuel pistol.
And not with the aid of tools.

Any car with a quick-filler (e.g. ATL) fuel inlet is not allowed.

21.3.2.3 For cars with the fuel-inlet on the side, it is allowed to have fuel-inlet on left and right hand side. However, during refuelling, it is NOT allowed to refuel the car on both sides simultaneously. On most circuits, the right hand side is applicable. The recommended side for the fuel inlet will be mentioned in the specific Supplementary Regulations.

21.3.2.4 The use of any adaptors or (ATL) filler bottles **are strictly forbidden**. The use of extra ventilation during refuelling is only allowed in conjunction with a vent-bottle.

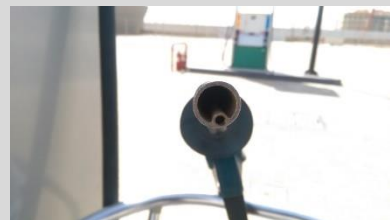
21.3.2.5 Important recommendation:

Please make sure your fuel-inlet (inlet, design, hoses) is capable of refuelling with 60 litres per minute with the pistol easily.

For safety reasons, the fuel flow automatically stops as soon as there is any obstruction and/or fuel flows against inlet-pipe or hose.

To avoid any delay in refuelling it strongly recommended to have a very smooth fuel-inlet design. E.g. no angles greater than 20 degrees.

Below refuel regulations are applicable for all events (unless different stated in the Supplementary Regulations)



21.3.3 General Refuelling Rules

21.3.3.1 A team member must refuel the car.

21.3.3.2 In the refuelling area, any vehicle that wishes to refuel must be attended by minimum one and maximum two team members in addition to the driver. This team member may instruct the driver and must push the car away in case the engine will not start and/or may carry a Vent-bottle.

21.3.3.3 These team member(s) must wear flame retardant clothing (suit, balaclava, gloves and closed footwear)

21.3.3.4 Refuelling will take place under the procedure, first car first refuelled. A team or team member cannot make a reservation or hold any fuel pump occupied.

21.3.3.5 It is advised to cover the upper part of the rear tyre located below the filler neck with a wet towel or a tyre cover.

21.3.3.6 There is NO limitation of maximum refuel amount. So at each refuel stop, the tank can be refuelled completely. As well under green as during Code60.

21.3.3.7 Not applicable.

21.3.3.8 In the refuelling area the speed limit is 20 km/h.

21.3.3.9 The driver must remain inside the vehicle and must have his seat belts FASTENED.

21.3.3.10 The windows and doors on both sides (left and right) need to be closed

21.3.3.11 It is strictly forbidden to change the driver in the refuelling area.

21.3.3.12 The engines of all cars are allowed to run during refuelling. (as refuelling is in a special refuelling area and NOT in the teams pit. See 21.3.3.16)

21.3.3.13 For all cars it is allowed to leave the lights on while being refuelled.

21.3.3.14 No activity other than refuelling is allowed, also no windshield cleaning.

21.3.3.15 All instructions of fuel officials, pit and fire officials have to be followed strictly.

21.3.3.16 Re-fuelling in front of the team's own pit box or in the team's pit box is strictly forbidden.

21.3.3.17 To empty the fuel tank of the car the car has to be moved to the refuelling area. Only in the designated draining area it is allowed to empty the fuel tank and dispose the fuel into (team owns) jerry cans/drums up to 50Kg. Only before or during the first free practice sessions this fuel can be refuelled into the car again.

21.3.3.18 After refuelling: (Seat belt, and/or in case of arm restraint, still fastened)

If the vehicle does not start after refuelling, the responsible representative(s) of the team must push the vehicle to the emergency exit of the refuelling area using the shortest route possible. Once they have left the refuelling area, they may be helped by the mechanics of the team, wearing a tabard, to reach their pit garage.

21.3.3.19 For Diesel engines, the additive as outlined in the homologation papers of the used compulsory particle filter are allowed.

21.3.3.20 Cars in the pit lane have priority over cars exiting the refuelling area

21.3.4 Not applicable

21.3.5 Refuelling area malfunction

21.3.5.1 In case the refuelling area is facing a malfunction of any kind, the promoter will do its utmost in order to solve the situation. A (temporary) solution may also include manual refuelling of the cars with cans or other means at discretion of the race director.

21.3.5.2 Any time lost in the refuelling area caused by force majeure will not be compensated.

22. Tyres and other parts

22.1 Introduction

HANKOOK, as title sponsor, will be the exclusive and single tyre supplier for all events. (Unless otherwise described in the Supplementary Regulations of the specific event and/or Exemption granted by the promoter.)

Hankook tyre prices and service are available on www.24HSERIES.com

22.2 All participating teams are obligated to run the entire event (any practices, qualifying and race) on Hankook tyres.

Only Hankook tyres may be used which are delivered by Hankook in one of the 24H SERIES events (those tyres can be recognized by a special decal/markings.)

The size is free, if not restricted in the technical regulations of a specific class, the number of tires is not restricted.

22.3 Exemption might be granted by the Promoter e.g. if Hankook is unable to supply suitable tyres (to be judged by the Promoter).

As the occurrence of such an exception is very rare, conditions apply to this exemption will be made on individual basis.

22.4 Hankook sticker obligations

22.4.1 All teams must affix HANKOOK stickers (will be provided by the promoter) on all 4 corners of the car.

22.4.2 Not applicable

22.4.3 Any logos, prints, badges or stickers from any other tyre brand on the car or driver's overall are prohibited

22.5 Hankook Tire Service provider:

C&R Motorsport

Contact person Christoph Stoll

Tel. +49 2482 1251883

Mobile: +49 175 2420 792

Fax: +49 2482 1251885

E-mail: info@crmotorsport.de

22.6 Any mechanical or chemical modification or heat-treatment, such as cutting, applying solvents or other products on either wet-weather or dry-weather tyres is absolutely forbidden.

22.7 For all cars

It is forbidden to use and/or the mere presence of tyre-warmers or any other method to artificially increase the tyre temperature throughout the event.

23. Publications and Communications

All communications will be published on the Official Notice Board (This may also be done digitally). Result copies can in addition be collected at the Drivers' Information desk.

23.1 Messages and communications on the official timing screens

Messages and/or communications may be published on the official timing screens. Any message or communication via the official timing screens is considered a service towards the competitors and are to be treated as such.

24. Two-Way Radio Communication – Race control and Competitors

Frequencies are subject to local authority approval.

The use of radio transmitters is subject to approval (the assignment of frequencies) by the local authorities.

It's the responsibility of the user (team) of the radio transmitter to make sure they have the relevant approval or authorization (e.g. short-term frequency assignment).

Only in case of any not foreseen (probably) disturbance (e.g. Race control, or other safety organisations) the Race Director can forbid any Radio communication of the competitors.

25. Responsibilities and Liability Renunciation of Competitors

Responsibility:

Competitors (competitors and drivers), team members and owners of the car take part in the event at their own risk. They carry sole civil criminal legal responsibility for any damage or injury caused by them or the vehicle they are using, provided that no liability exclusion is concluded subsequent to the present regulations. The signee confirms that any additional regulations and rules are read and understood and ensures to comply with them.

The team manager and all drivers must sign the entry form.

Liability

With the submission of the entry, each competitor, driver and owner of the car agrees to save harmless and to keep indemnified from and against all actions, claims and demands arising out of or in connection with the competitors of the event:

- The host ASN, the membership organisations, the FIA, its Presidents, organs, managing directors, general secretaries
- The KNAF and their officials
- The promoter and the local organisers and its officials and members
- Administrative authorities, racing services and any other person being involved in the organisation of the event,
- The road construction authorities as far as any damage is caused by the condition of the roads used during the event and
- The agents, workers of all persons and posts mentioned above with the exception of damages arising from life injury, from physical injury or from health injury caused by a deliberate or negligent breach of duty – including a legal representative or an agent of the group of persons for which the liability renunciation has been declared – and with the exception of other damages arising out of a deliberate or negligent breach of duty – including a legal representative or an agent of the group of persons for which the liability renunciation has been declared;

Against:

- The other competitors (competitor and drivers), team members, their assistants and the owners of the other cars.
- The own competitor, drivers and own assistants they agree to save harmless and to keep indemnified from and against all actions, claims and demands arising out of or in connection with the event (un- timed, timed practice, , warm-up, race), with the exception of damages arising from life injury, from physical injury or from health injury caused by a deliberate or negligent breach of duty – including a legal representative or an agent of the group of persons for which the liability renunciation has been declared – and with the exception of other damages arising out of a deliberate or negligent breach of duty – including a legal representative or an agent of the group of persons for which the liability renunciation has been declared.

This liability renunciation comes into force for all persons involved at the moment the entry application is submitted.

The liability renunciation refers to any claims for whatever reason, in particular for liability claims arising out of contractual as well as non-contractual responsibility and to any claims arising out of unauthorized actions.

Tacit liability renunciations are not affected by the above liability renunciation provision.

Release from Claims of the Vehicle's Owner

- If the competitor or the driver is not themselves owner of the race car, they must ensure that the waiver, which is printed on the entry form, is signed by the car owner.
- If the above-mentioned declaration was not signed by the car owner, the competitor and driver discharge all persons and posts mentioned in art. 25 of this chapter "Responsibilities and Liability Renunciation of Participants" from any claim by the car owner, with the exception of damages arising from life injury, from physical injury or from health injury caused by a deliberate or negligent breach of duty – including a legal representative or an agent of the group of persons for which the liability renunciation has been declared – and with the exception of other damages arising out of a deliberate or negligent breach of duty – including a legal representative or an agent of the group of persons for which the liability renunciation has been declared;

With regard to claims against the other competitors (competitors and drivers), their assistants, the owners and proprietors of the other cars, the owner competitor, the owner driver(s), (any other agreement among proprietor, competitor, drivers have priority) and own assistants, this release refers to damages arising in connection with the event (un-timed, timed practice, warm-up, race). With regard to claims against other persons or posts, this release refers to damages arising in connection with the event as a whole.

Tacit liability renunciations are not affected by the above liability renunciation provision.

With the submission of the entry to the promoter, this agreement comes into force in relation to all persons involved.

With the submission of the entry and/or by signing the entry form, the Team Manager confirms that he has informed the competitor and the owner of the vehicle about the entire content of this art. (art. 25 of this chapter; Responsibilities and Liability Renunciation of Competitors) and the content of the entry form.

This renunciation of liability is also entirely valid for any additional unofficial testing that the promoter hosts in the week leading up to or during the event.

General Data Protection Regulations (GDPR)

By submitting an entry, competitors/ drivers confirm that the organiser/promotor may, for the own purpose of the event, electronically collect, process, store and, as far as necessary for the sporting organisation, publish the personal data of the competitors/ drivers. The organiser will not transfer personal data to third parties that have no relation to the event.

26. Interpretation of the Regulations

26.1 Only the Race Director and the Stewards can give binding information about the event.

26.2 In the case of any dispute on interpretation of this Sporting & Technical Regulations, the Supplementary Regulations and the General Provisions during the event, it is solely up to the Race Director in consultation with the stewards to decide the interpretation and/or criteria.

26.3 No claims can be raised from any decision taken by the Race director, Clerk of the Course, Stewards, Organiser and Promoter.

27. General Code of Driving Conduct

27.1 Respect Code of Driving Conduct

All drivers must respect the requirements detailed in the provisions of the Appendix L (chapter IV) to the International Sporting Code (ISC) in relation to the Code of Driving Conduct on Circuits. These prescriptions are completed as follows:

27.2 Behaviour on track

An endurance race is a special event and requires a fair conduct from all drivers involved. Due to the fact that there are many classes of cars and different level of experience between drivers (AM to PRO), drivers need to realize:

27.2.1 The FIA Annex L has general regulations regarding overtaking, for these endurance races it must be added that the 'driver of the faster car' is responsible for safe and sportive overtaking of the 'driver of the slower car'. The 'driver of the slower car' is not allowed to make manoeuvres liable to hinder, deliberate crowding of a car beyond the edge of the track or make abnormal change of direction; stay on your racing line.

27.2.2 Any driver obstructing or endangering other competitors during any practice or race due to their driving behaviour or apparently not being up to the requirements (e.g. tiredness) of the race may be summoned for a medical examination and/or refused the start or to continue at discretion of the race director.

27.2.3 Any possible advantage taken or used by a driver as a result of a possible unclear situation on track is forbidden. An unclear situation is not an opportunity for advantage and may be penalized at discretion of the Race Director.

27.3 Does not apply.

27.4 Should a driver be obliged to stop his car on the circuit, the car must be removed from the track with the utmost caution as quickly as possible by taking the shortest way. Follow the instructions of the officials.

27.5 Any stopping immediately in front of, in or after a curve is prohibited (See also Chapter I, art. 34.4). It is also prohibited to move a car opposite or transverse to the direction of the race for whatever reason, unless he/she is instructed to do so by an official.

- 27.6** If the circuit is blocked or any practice, qualifying or race is stopped, the drivers are obliged to pull off the track to the right or left side so that the rescue cars have enough space to proceed to the place of accident.
- 27.7** The use of high beam headlights in the pit lane and refuelling area is prohibited.
- 27.8** During the race it is NOT allowed to continuously drive with flashing head lights. If the Race Director decides the interpretation continuously on flashing it can be penalise
- 27.9** It is not allowed to have any kind of red or orange light at the front of the car.
- 27.10** It is strictly prohibited
- to store additional fuel outside the installed tank
 - to take any additional person aboard the car during any practice, qualifying and race,
 - to stop on the track without being demanded to do so by the officials.
- Any failure to respect these conditions/ prescriptions will result in a penalty at discretion of the Race Director.
- 27.11** **Maximum speed in the pit lane/weighing area/refuelling area**
The respect of the speed limit in the pit lane will be checked.
The penalty for speeding, see article 41 Time Penalties Procedure
- 27.11.1** Maximum permitted speed in the **pit lane: 40 km/h.**
- 27.11.2** Maximum permitted speed in the **refuelling area: 20 km/h.**

28. Flag Signals

- 28.1** The rescue services and race control are organised in compliance with the prescriptions of the Appendix "H" to the FIA International Sporting Code. The drivers must carefully study these provisions, respect the signals and the instructions given by the officials. The flag signals do not release the drivers from their obligation to avoid any endangering of other drivers if he/she perceives a dangerous situation.
- 28.2** Additional to the flag signals referred to above; The CODE-60 (Purple) FLAG is applicable. This CODE-60 FLAG will be prescribed in article 29.
- 28.3** According to art. 2.10 of the Appendix "H" (ISC) Light boards might substitute the flag signals. The light boards and other light signals used must be respected in the same way as the flag signals mentioned before.
- 28.4** In situations where flags and light boards of the same colour are shown at the same time, the signal shown first counts.

29. Neutralizing of the race by means of a Code-60 Procedure

- 29.1** Instead of the use of a safety car to secure areas of danger or accidents, for additional safety reasons, the Race Director can neutralize the race by means of a CODE-60 Procedure (Code-60 flag).

29.2 Introduction of CODE-60 Procedure

The idea behind this CODE-60 Procedure is additional safety in case of an accident or other insecure situation.

The main (safety) advantage of the code-60 Procedure is the fact that ALL cars will lower their speed immediately without braking, the maximum speed will be 60km/hour and overtaking is strictly forbidden.

This means that the complete track is secured immediately, and rescue officials and rescue vehicles can do there important work on a save way.

Maximum Safety is the only reason of this Code-60 Procedure. Only of secondary matter, there is no advantage or disadvantage for none of the drivers, because all cars will drive (maximum) 60km/hour (the distance from car to car will stay the same). By means of the time-intermediates in the track, timekeeping will automatically



measure the speed of all cars. In case of exceeding the speed limit (occasionally or on average) this will be sanctioned.



- 29.3** When the order is given to deploy the code-60 Procedure, ALL marshal posts will SIMULTANEOUSLY display the PURPLE flags, with the NUMBER 60 on it.
At the moment the code-60 Flags are shown, ALL drivers have to release the throttle immediately without braking.
During this CODE-60 Procedure it is forbidden to drive faster than 60km/hour.
- 29.4 While the CODE-60 Procedure is in operation**
- 29.4.1** The Pit Lane is open, so competing cars can enter the pit lane and re-join the track. A car re-joining the track under these conditions will proceed at reduced speed (speed limit is 60km/hour).
- 29.4.2** Serving of Time-penalties during CODE-60 is allowed, however the time-penalty will be **doubled**
- 29.4.3** **The fuel station is open during CODE-60** and (see also art. 21.3.3.6) there is NO limitation of maximum refuel amount. So at each refuel stop, the tank can be refuelled completely. As well under green as during Code60.
- 29.5 Sanction:**
Any car that exceeds the speed limit of 60km/hour can be sanctioned, with a time penalty double value of the encountered advantage when driving too fast.
- 29.6** When the Race Director gives the order to end the CODE-60 Procedure, ALL marshal posts will SIMULTANEOUSLY display waved GREEN flags. At the moment the GREEN flags are shown, the race will proceed and it is allowed to overtake.
- 29.7** Each lap completed while the CODE-60 Procedure will be counted as a race lap.
If during this procedure the time should reach the end of the race, the chequered flag will be used as normal to finish the race.



30. Practice/Driving Time/Change of Drivers/Qualifying

Information regarding private test sessions

Additional paid private test sessions may be authorised by the Promoter before certain events. Any such optional paid private test sessions will be open to all Competitors but will not be mandatory. These sessions will not be considered as part of the event.

During the private test sessions, the pit lane and refuelling regulations of this chapter are applicable.

The price per car and the instruction for any such tests will be made available before the event.

30.1 Practice

The practice sessions will take place according to the time schedule.

- 30.1.1** Only cars having successfully passed scrutineering (TC-Approved Sticker) and displaying the "FINAL" sticker will be allowed to take part in any practice sessions.

30.2 Driving Time (stint time) during the race

- 30.2.1** The maximum driving time (stint time) for each driver without a change of driver is: **No restrictions**
Also **NO restrictions on minimum driving time.**
Note art. 30.5 about mandatory minimum driver changes.

30.3 Minimum Rest Time

The Minimum Rest Time of a driver: **No restrictions**

30.4 Driving multiple cars

A driver is allowed to drive **maximum two different cars** during the event.

30.5 Change of Drivers

Minimum 3 driver changes mandatory

Any change of drivers may only take place in the pit of the team or in the working area or Pit lane before the pit assigned to the team.

31. Drivers' and Team managers Briefing

- 31.1** A drivers' and Team managers briefing will take place for all competitors of the specific event. The exact location and time will be published in the event time schedule.
The Briefing will be in English.

- 31.2** All team managers must attend the team managers briefing.
All drivers must attend the Drivers Briefing.
Any additional briefing during an event must be attended by the relevant drivers and/or team managers.

32. Starting Grid

32.1.1 The Start grid will be 1 group (all classes)

32.1.2 After the qualifying a list approved and signed by the Stewards with the fastest time per car will be published. This best qualifying lap time in the qualifying will determine the grid position.

32.2 In case there is more than one qualifying session (see time table), the overall best lap time will count as the best qualifying lap time.

32.3 The starting grid will have two cars in each row, side by side.

32.4 The free practice lap times are regarded as training sessions and not as part of the qualifying session.

32.5 The pit lane exit closing time will be mentioned in the official briefing of the specific event.

32.6 Any car failing to appear on the starting grid when the pit lane exit is closed, will have to start the race from the pit lane after the last vehicle has past the exit of the pit lane and a green light at pit exit is given.

32.7 Free grid positions on the start grid will not be occupied.

32.8 A reconnaissance lap is mandatory before taking the grid position. See also art. 34.5.6 of this chapter.

33. Start

33.1 Starting Mode: Rolling start

33.2 Starting procedure

33.2.1 The following boards will be shown to the competitors:

- 5 minutes
- 3 minutes – Car must be "on the wheels". It is no longer allowed to work on the car. Team members must immediately leave the grid! (one team member per car is still allowed)
- 1 minute engines must be started (all team members must leave immediately)
- 30 seconds

33.2.2 When the one-minute board is shown, engines must be started. When the green flag is shown, the cars will begin the warm-up lap behind the official leading car and cover **ONE lap** over the complete circuit. The starting order must be maintained until the start line.

33.2.3 Any failure to respect these conditions/ prescriptions will result in a penalty at discretion of the Race Director or the Race Director brings the non-compliance for the panel of Stewards for a penalty of their discretion.

33.3 Definition of START line and FINISH line

The timekeeping loops referring to the START line and FINISH line of an event will be mentioned during the briefing.

33.4 Warm-Up laps

33.4.1 There will be **ONE warm-up lap** behind the Official leading car.

33.4.2 Any car that is passed by the complete field shall remain at the end of the starting group and start from the last position. If more than one car is thus affected, they must line up at the end of the starting group in the order in which they have left the starting grid.

Any car that is NOT passed by the complete field may take up again its assigned position of the starting group up to the sign "GRID" has been shown.

Any car that is passed by an official leading car must enter the pitlane and start from the pitlane.

During the warm-up lap behind the Official leading car, after the sign "GRID" has been shown, it is forbidden to make zigzag manoeuvres and the distance with the car in front of you must be no longer than 3 car lengths. This is meant to format a smooth 2x2 formation.

33.4.3 At the end of the warm-up lap and if the Race Director considers it appropriate, he will instruct the Official leading Car to withdraw.

33.4.4 When the Official leading Car has pulled away the Pole Position car will be responsible for maintaining the speed towards the start/ finish line.
The signal for the start of the race can be given from this moment on. The leading cars will remain their speed (of approx. 60 km/h) until the RED start-light is switched OFF.

33.4.5 When the RED start-light is OFF, the race starts **and** you may overtake.

33.5 The race time starts after the red lights are switched off.

If a problem arises during the start, the RED Light will not be switched off and yellow lights will flash at the start/finish line. The Race Director will decide: either Code-60 or RED-flag. (see art. 35)
In this case, the official start of the race time will begin after the warm-up lap, when the first car passed the FINISH line after the warm-up lap.

33.6 False start

Failure to maintain the start position, dropping back and or acceleration before the RED light is switched OFF may result in a Time Penalty at discretion of the Race Director. It is mandatory to maintain the grid formation using the start grid boxes.

34. Leaving the Track, Repairs and Outside Assistance

34.1 Drivers leaving the track must re-join the race in a safe manner.
Taking a short cut will result in a penalty at discretion of the Race Director.

34.2 Any repairs during any practice, qualifying or the race may not be carried out on the track. Assistance may only be given in the pit box and pit lane. Outside assistance will be penalized at discretion of the Race Director.

34.3 Any car stopped on the circuit may be brought back to the pit lane or scrutineering for repair by order of the Race Director. The Race Director strives to bring back broken cars to the pit lane or paddock. Please note this is service and competitors cannot claim their car to be recovered before any practice, qualifying or race ends.

34.4 In case of a (technical) problem, for safety reasons, drivers should always do anything possible to stop the car at a safe place, e.g. at the side of the track or run off area. It is not allowed to stop on track.

34.5 Entrance to and exit of the pit lane

See also Appendix L, Chapter IV, art. 4 & 5.

34.5.1 The section of track leading to the pit lane shall be referred to as the "pit entry".

34.5.2 Any driver intending to leave the track or to enter the pit lane make sure that it is safe to do so.

34.5.3 During Competition access to the pit lane is allowed only through the pit entry.

34.5.4 Except in cases of force majeure (accepted as such by the Race Director), the crossing, in any direction, of the line separating the pit entry and the track is prohibited.

34.5.5 Except in cases of force majeure (accepted as such by the Race Director), any line painted on the track at the pit exit for the purpose of separating cars leaving the pits from those on the track must not be crossed by any part of a car leaving the pits.

34.5.6 The entrance of the track and the start grid is through the pit exit

35. Stopping any practice, qualifying or the race, (Red Flag)

The Race Director reserves the right to interrupt or stop the race, any practice or qualifying.

35.1 Red flag during any practice or qualifying

All cars must go directly into the pit lane. (Working on the cars is allowed in the working lane).

35.2 Red flag during race

In such a case, the red flag will be shown at the starting line and the red light will be switched on. Simultaneously, red flags will be shown at all marshal posts. When the signal to stop is given, all cars must immediately reduce speed and proceed slowly and follow the instructions of the officials. Overtaking is strictly forbidden. The pit lane will be closed. The timekeeper will keep the time running unless otherwise stated.

All vehicles will form up in formation at start finish, in front of the pits. Any repair work in the pit lane / box that is being carried out must stop immediately (on grounds of safety any vehicle that has already stated refuelling may complete this exercise and then stop all activities). The exit of the pit lane will be closed.

35.3 Restart

The race will be resumed behind the leading car according to the procedure and conditions of Article 2.10.20 of Appendix H of the ISC or under a code 60 procedure. All the Articles concerning the neutralization of the race will apply. The Leading car will enter the pits after one lap unless all cars are not yet in a line behind the Leading car or the race director considers that it is not safe to resume the race.

36. Finish of the Race

36.1 The end of the race signal will be given to the lead car as it completes its first lap at the Finish line after the completion of the race time.

36.2 Any driver stopping his car or proceed at walking speed to wait for the end-of-race signal so that they obstruct others will receive a penalty at discretion of the Race Director.

36.3 Speed must immediately be reduced after receiving the end-of-race signal. All cars must directly be brought to the Parc Fermé WITHOUT stopping and all officials' instructions must be observed. An offence will lead to penalty at discretion of the Race Director.

36.4 The pit lane exit will be closed once the chequered flag is displayed.

36.5 While the chequered flag is shown at the finish line, it's NOT allowed to finish the race in the pit lane. Teams who finish in the pit lane will receive a time penalty.

37. Parc Fermé/Final Scrutineering

37.1 The Parc Fermé location at the end of the race will be announced in the briefing of the specific event.

37.2 All competitors must follow the special instructions to bring their cars to the Parc Fermé where they will remain until the Stewards order their release.

37.3 The first 3 ranked cars may be asked to come into the pit lane for the podium ceremony. Please note, there will be an podium ceremony per class. For this podium-area, the Parc Fermé regulations are applicable.

37.4 Drivers need to leave the Parc Fermé area immediately.

37.5 After Qualifying there will be NO Parc Fermé

37.6 In the case of an external scrutineering, the competitor concerned must bear all the costs involved.

38. Not applicable

39. Classification and podium

39.1 Classification

39.1.1 After the race-time has expired regardless of the number of laps covered the chequered flag will be shown to the overall leader and all following cars as soon as they cross the finishing line at the end of the race.

39.1.2 Cars will be classified taking the number of laps completed into consideration and then in the order in which they have crossed the finishing line if there are equal numbers of laps. Only laps which have been completed with own engine power will be taken into account for the classification.

39.1.3 All cars will be classified. Independent of their laps. This is also applicable for teams which have not taken the chequered flag.

39.1.4 There will be a class and an overall classification.

39.2 Podium

39.2.1 The provisional prize giving for the top three winners of each class will take place immediately after the race end on the prize giving podium.

39.2.1 All the drivers of the relevant teams must immediately after the race end proceed to the podium. The top three in each class will receive cups. Cups will be awarded to all drivers of the teams concerned.

39.2.2 This ceremony is part of the event. Prizes will not be mailed.

39.2.3 It is highly appreciated if all drivers on the podium wear their race suit.

40. Penalties

40.1 Penalties imposed by the Race Director

Following penalties may be imposed by the Race Director:

- Cancellation of any practice or qualifying laps
- Cancellation of race laps
- Time Penalty
- Lap Penalty
- Drop of grid position
- Drop of positions in the classification
- Warnings
- Any other penalties at discretion of the Race Director

40.2 Penalties imposed by the Stewards

- Disqualification: this penalty may only be given by the Stewards and in consultation with the Race Director

40.3 Basically all penalties will be inflicted on the competition number, which means not the individual driver but the complete team.

The Race Director can make exceptions on this (e.g. regarding driving behaviour)

41. Time penalties– Procedure and other penalties

Time penalties are given for more than one reason, the following, with the accompanying time penalties, are the most common reasons for which time penalties are incurred, however the Race Director is empowered to enforce or rescind time penalties as he sees fit to do so, different situation and circumstances which occur during the race, any practice or qualifying may result in a different time penalty than here stated.

41.1.1 Time penalties must be settled within two hours

Time penalties must always be settled by a team within 2 hours after the team has been informed about the (time) penalty. If a team does not respect this time frame, the imposed time penalty will be doubled.

41.1.2 Time penalties received during the last two (2) hours of the race

- **Each Penalty > 30 seconds:**
Must be served before the finish of the race.
If not served by the team, the penalty will be doubled and converted into laps at discretion of the race director.
- **Each Penalty ≤ 30 seconds:**
If not served by the team, the penalty will be processed by the official timekeeper of the event. These time penalties will not be doubled.

41.2 List of time penalties

Below time penalties may be imposed, at discretion of the race director

41.2.1 Overtaking under a code-60 situation: **60 seconds**

41.2.2 Speeding in the pit lane or refuelling area: **2 seconds per km/h**

41.2.3 Driving too fast under a code-60 situation: **Time gained in seconds x 2** Time gained is determined by Race Director.

41.2.4 Overtaking under a yellow flag situation: At discretion of the Race Director

41.2.5 Not respecting track limits (4 wheels over the white line):

- During the race:
 - After three times exceeding the track limits in the same turn: **Warning on timing screen**
 - Every next third exceeding of the track limits in the same turn: **10 seconds**
- During qualifying: Every infringement with best lap time: **Lap cancellation**

41.2.6 Taking a short cut: At discretion of the Race Director.

41.2.7 Finishing in the pit lane: **20 seconds**

41.2.8 Not applicable

41.2.9 Not applicable

41.2.10 Not applicable

41.2.11 Not applicable

41.2.12 In the case of (small) technical deviations (e.g. weight of the car, car ride height, etc.), with reference to the technical regulations, described in these regulations, the Race Director may give a time penalty for this infringement. This time penalty will be at least twice of the advantage the team may have gained. Time gained is determined by Race Director.

41.2.13 Not applicable

41.2.14 Not applicable

41.2.15 Missing the Official Briefing (Drivers and Team Managers)

Penalized at discretion of the race director

41.2.16 Driving Car into pit box under its own power

Penalty up to **10 seconds**, see also art. 21.2.5 of this chapter.

41.2.17 Not applicable

41.2.18 All other time penalties, at discretion of the Race Director.

41.2.19 Not applicable

41.3 Procedure

41.3.1 The infringement for which time penalties are given is as observed by any official and or the official time keeper at the event and reported to the Race Director.

41.3.2 The Secretary of the event will inform the Competitor of the infringement and time penalty, the team manager will sign for having received the notification and receive a copy of this for his/her own use.
This can be communicated in any way (e.g. on paper or digitally)

41.3.3 It is the obligation of the team to inform the secretary of the event, by giving the notification of the penalty, at which time the penalty shall be served (normally this will be the first following pit stop).

41.3.4 A Competitor, who has received a time penalty, stops in the designated penalty area. The penalty time starts the moment the vehicle comes to a complete stop. Only after the completion of the time penalty the vehicle may leave this area and continue on to the pit box for service repair and or change of driver and or refuelling.

41.3.5 The driver of the team who is at that moment the driver of the vehicle that has received the penalty will stop at a pre designated place in the pit lane and wait at this place for the duration of the time penalty (during this time it is not allowed to work on, refuel or change drivers of the vehicle). The driver must wait in the vehicle with safety belts, helmet and race clothing on as he or she is still a driver taking part in the event, The team is obligated to see that the time penalty is carried out in the proper manner and at the appropriate place, the Race Director will only check that the penalty has been served.

41.3.6 The Race Director or one of his officials is only responsible for checking that the time penalty has been carried out, this may be done through the use of video film from the circuit or any other means at his disposal.

41.3.7 Time penalties that are incorrectly carried out (as a whole or as a part) will be treated as not being carried out completely and the part of the penalty that has not been served will have to be carried out again.

- 41.3.8** The pre designated place where teams are to take their time penalties will be pointed out at the drivers briefing.
- 41.3.9** Serving of Time-penalties during code-60 is allowed, however the time-penalty will be doubled.
- 41.3.10** It is not required to solve penalties of less than or equal to 5 seconds. In this case you may add this time penalty of 5 seconds or less) to another time penalty and solve these at once (always inform Secretary of the event!). Otherwise time penalties of less than or equal to 5 seconds will be added to your race time at the end of the Race.
- 41.3.11** Several Time penalties may be served at once, as long as they are served within the timeframe defined in art. 41.1.1 of this chapter.

42. Protests

- 42.1** Protests must be lodged in accordance with the stipulations of the present FIA International Sporting Code (Art. 13).
Under strict respect of the protest time limits of 30 minutes, all protests must be lodged in writing, addressed to the Stewards of the meeting and handed to the Race Director or, their assistant, if this is not possible, to the chairman of Stewards along with an ASN set deposit. (See below).
Those 30 minutes starts from the moment of publication of the signed provisional classification results on the official notice board.
- 42.2** **Protests deposit**
- Deposit as defined : See supplementary regulations
 - Only the competitor has the right to lodge a protest.
- 42.3** Any dismantling costs resulting from a protest must be set in accordance with the prescriptions of the International Sporting Code.

43. Appeal

- 43.1** The appeal procedure is governed by the provisions of Article 15 of the International Sporting Code.
- 43.2** If the competitor would like to appeal the deposit amount is: See supplementary regulations
- 43.3** Any dismantling costs resulting from an appeal must be set in accordance with the prescriptions of the International Sporting Code.

Chapter II – Not applicable

Chapter III – Technical Regulations for all Cars

1. General Regulations for all Cars

For all specific Cup Classes (e.g. 991) the technical regulations of this chapter prevails over the technical regulations of the specific class (appendices).

The applicable Technical regulations per class can be found in the class appendices

Unless explicitly described otherwise, the safety Regulations as specified in the current Article 253 of the Appendix J to the current ISC must be respected for all cars.

- 1.1** The promoter reserves the right to amend the present Regulations with approval of the ASN before the start of the event.
- 1.2** To be eligible, all cars must comply with the prescriptions of the present Regulations.
- 1.3** Only the organiser decides about the admission of a car before the start of the Event.
The decision taken by the organiser is final, during the Event the decision is with the Race Director after consultation with the Stewards.
- 1.4** Any car damaging the reputation of automobile sports relating to their presentation may be rejected – and the promoter is not obliged to reimburse the entry fee or any other costs or fees.
- 1.5** A Vehicle Identity Form must be produced for all cars failing to hold a homologation form. This Identity Form must be duly completed and submitted together with the entry application form. Spare-parts catalogues and workshop manuals for these cars must also be kept at hand. Any proof possible asked for must be furnished by the competitor of the car.
(An example of a Vehicle Identity Form is the "DMSB Wagenpass").
If such a vehicle identity form is not available, the team is must provide to the required documentation requested by and on discretion of scrutineering. E.g. manufacturer information and technical information of the car.

2. Noise Limitations

2.1 Noise Limitation

To show respect to the circuits neighbours, the aim for a "greener" world and to show respect the FIA statement "MAKE CARS GREEN" competitors will be asked to explicitly acknowledge by signature on the entry form their entered race car will NOT exceed the following noise limitations.

- 2.1.1** The noise limitations and regulations by local authorities and circuits always take precedence with regards to the regulations described below. In such case, these noise limitations will be described in the Supplementary Regulations of the specific event.
- 2.1.2** The following noise limit values may not be exceeded:
For all events, for all classes:
 - **110 dB(A)** at 0,5m measured according to the measuring method, as described below.
 - Unless otherwise defined in the Supplementary Regulations of a specific race

2.2 Additional following rules are applicable

Measurements will be made at 0.5 meter from the end of the exhaust pipe with the microphone at exhaust outlet level at an angle of 45 degrees with the exhaust outlet. Where more than one exhaust outlet is present, the test will be repeated for each exhaust and the highest reading will be used. In circumstances where the exhaust outlet is not immediately accessible, the test may be conducted at 2.0 meter from the centre line of the vehicle, with the microphone 1.2 meter above the ground. Measurements should be made outdoors with no large reflecting objects (e.g. walls etc.) within 3.0 meter (in the 0.5 meter test) or within 10.0 meter (in the 2.0 meter test).

Background sound levels should be at least 10dB(A) below the measured level.

With distances from 2.0 meter to 8.0 meter it is necessary that there be a minimum of 20.0 meter radius open flat space around the vehicle. Where possible measurements should be taken as close as possible to the vehicle, at the defined distances, to avoid background noise.

The noise generated by the car must not exceed the prescribed noise level at 3800 rpm, or at three-quarter maximum revs if this is less

2.3 Checks can be carried out throughout the entire duration of the event by means of the aforementioned static test

2.4 Penalties for Noise infringements

Any offence against the noise limitation regulations may result in the following penalties:

2.4.1 During any practice or qualifying:

- **1st offence** – the practice/qualifying lap times achieved until the moment the infringement is discovered are cancelled; the car must be made to conform to the noise prescriptions. For this purpose, the black flag with orange disc together with the race number on a separate board will be displayed to the relevant driver at the Line. The car must immediately return to the pits.
- **2nd offence** – all further practice/qualifying lap times will be cancelled. The car may be refused to continue practice/qualifying and the Race Director may decide not to admit the car to the race following the infringement against the noise prescriptions.

2.4.2 During the race:

- **1st offence** - The black flag with orange disc together with the race number on a separate board will be displayed to the relevant driver at the Line. The car must immediately return to the pits and make his car conform.
 - The car must then be represented to the scrutineers.
 - The car may re-join the race after confirmation of the Race Director.
- **Additional offences** – In the case of a repeated offence, the Race Director may refuse the team to continue the race. In such a case, the black flag together with the race number on a separate board will be shown to the relevant driver at the Line. The car must immediately return to the pits and stop his car.

3. Special Technical Regulations and Safety Regulations for all Cars

3.1 Window Net or Arm Restraint

3.1.1 The use of a window-net (NASCAR net) on the driver's side is compulsory for all cars, mounted accordingly to the FIA regulations, Article 253 of the Appendix J.

As an alternatively the use of an arm restraint as per SFI 3.3 specification is allowed.

One of those is compulsory.

- 3.1.2** For the use of an arm restraint: A climbing hook is advised and allowed between the hip belt part of the safety harness and the lower loop of the arm restraint.

See below examples of both.



Example of window-net (NASCAR net)



Example of Arm restrain

3.1.3 Exceptions (GT3 cars, 991 Cup Cars and GT4 cars)

GT3-FIA-homologated cars only

Only for GT3-FIA-homologated cars with FIA racing net 8863-2013 acc. homologation:

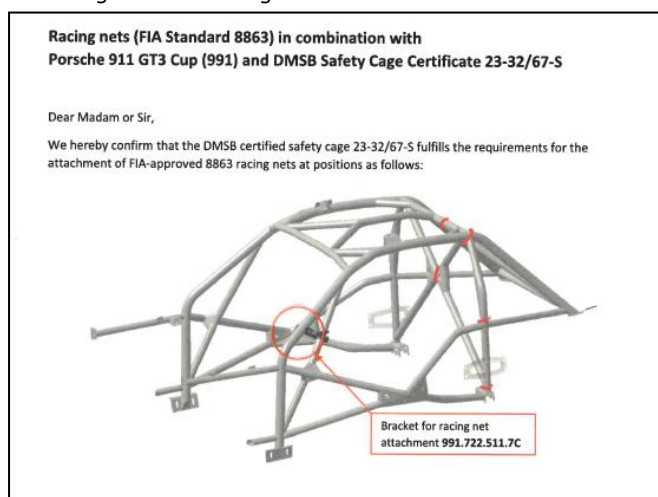
The window-Nascar-net is NOT required.

An arm restraint is strongly advised

Porsche 911 GT3 Cup (991) cars

It is mandatory to use one of the following options:

- Window (NASCAR) net
- Arm restraint
- FIA-approved Racing net (standard 8863) in combination with bracket for Racing net 991.722.511.7C, according to the drawing below:



GT4-homologated cars

It is mandatory to use one of the following options:

- Window (NASCAR) net
- Arm restraint
- FIA-approved Racing net (standard 8863), as provided by the car manufacturer of the specific vehicle

3.2 Safety harness

An FIA homologated 5 or 6-point safety harness is compulsory for all cars. (According standard 8853/98)

A 6-point safety harness is advised.

3.3 Shielding the side windows with transparent film

It is recommended to shield the side or door windows with a transparent safety film (not tinted).

3.4 Front Headlights

This art. is applicable for all cars

3.4.1 The maximum of 6 front headlamps (units) is permitted for all cars.

3.4.2 In case a car has (standard) only 4 headlights, it is allowed to mount 2 additional (external) headlamps (units). These headlamp (units) may also be LED-units. A LED-unit (up to approx. 20cm, at discretion of scrutineering) is considered as one headlamp.

For the purpose of additional headlights it is preferred to integrate them in the FRONT-BUMPER. (So for this purpose it is allowed to make holes in the front-bumper.)

It is allowed to install additional headlights in front of the front bumper, but it is NOT allowed to install them on the bonnet.

3.4.3 At least two front headlights must be working and be symmetrical to the axis of the vehicle. If this is not the case or any or all of the rear side and brake lights should fail to work, the driver must stop in its pit and will not be authorised to return to the track until the lights work correctly.

3.4.4 It is not allowed to have any kind of red or orange light at the front of the car (See Chapter 1, art. 27.9)

3.4.5 The main- and additional headlight adjustment must be installed in a way that normally no other competitor is obstructed. This may be checked during scrutineering.

3.5 Rear Fog Lamp

All cars must be equipped with a FIA homologated or standard equipment (O.E.M.) red rear fog lamp. (technical FIA List No. 19).

Preferred is a FIA homologated red rear fog lamp.

3.6 Protection for Exhaust Pipe

A special protection for the exhaust pipe is recommended (for example by means of gusset plates, rebound straps, etc.). The noise prescriptions specified in Article 2 (Chapter III) of the present Regulations must be respected in relation to the exhaust system.

3.7 Radiator Protection

Oil and water radiators may be protected against damage with a fine-meshed wire netting.

3.8 Shielding rear and quarter Windows

The rear side or quarter windows may be partly shielded (the rear view must however be guaranteed as a clear view).

3.9 Video cameras

The scrutineers must approve the fixation of any video camera to the car at initial scrutineering.

3.10 Cockpit lights and signalling lights

It is allowed to add extra (small) lights in the cockpit, with the purpose, e.g. to dashboard, etc. for the driver during the night.

It is allowed to add signal lights in-out outside the car, with the purpose to recognize the car for team crew.

It is not allowed to have any kind of red or orange light at the front of the car. See art. 27 of chapter I.

3.11 Electrical drink system for the driver

With the purpose to hydrate the driver (drinking of water), it is allowed to:

- Add a water bottle/container into the cockpit
- Add an electrical pump to pump water to the driver
- Fill the water bottle/container from outside, e.g. through side window, e.g. like picture below



3.12 Additional electrical switches/buttons inside the cockpit

It is allowed to install additional electrical switches and/or buttons on the centre console for any additional electrical device and/or modification that is allowed in these regulations. E.g. (on/off) switch for window heater, rear fog-lamp, transponder, Driver-ID switch, switch on/off ABS (if allowed), Start number lights, etc.

It is allowed to extend the dashboard or place a safely mounted surface in the centre console for this purpose. This also applicable for the specific Cup classes.

3.13 Competition Seat

A FIA current homologated competition seat with supports in compliance with Article 253 of the Appendix J is compulsory for all cars.

3.14 General Circuit Breaker

A general circuit breaker in compliance with Article 253.13 of the Appendix J is compulsory.

3.15 Fire Extinguishers

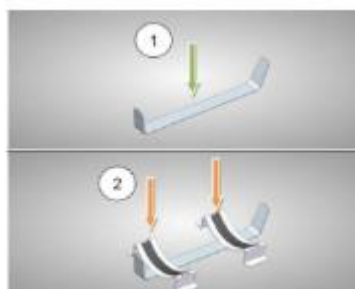
3.15.1 A fire extinguishing system homologated by the FIA for Touring Cars is recommended (with the compulsory fixation of the extinguisher bottles). For cars without a fire extinguishing system:

- A manual extinguisher in compliance with the FIA technical list No.6 prescriptions is compulsory
- or fire extinguisher must be according homologation, if this is minimum according the FIA-regulations.

3.15.2 For Fire extinguishers (Systems and Manual extinguishers):

Anti-torpedo tabs are required according art. 7.2 and 7.3 of Appendix J – art. 253

E.g. like following pictures:



3.16 Rollover Structure

A rollover structure is compulsory. It must comply with Article 253.8 of the Appendix J 2002 or 2005 or later of the ISC according to the original building date of the car.

3.17 Fuel filler neck with safety overflow

If the filler neck is fitted inside the luggage compartment, the filler neck must not be connected to the lid and must have free access from outside without opening the boot lid.

The filler neck must be provided with a sufficiently large collar with an overflow pipe or tube which must be directed towards the outside of the luggage compartment.

See picture with example.



4. Handicap/BOP-Regulations

4.1 General (For all classes)

4.1.1 Handicap regulations may be established for certain models of cars or even for individual cars, for example extra ballast, boost-pressure limitation and/or air restrictors.

4.1.3 In case of disproportional fast car, the promoter may assign the car to another class and/or amend BOP.

5. Specific technical equipment

5.1 Competition Numbers and Advertising Stickers

5.1.1 Competition numbers and advertising stickers will be issued at the Welcome Centre and must be fixed to the car before Scrutineering according to the instructions given. The scrutineers will accept only cars showing those competition numbers issued by the promoter.

5.1.2 Two (2) competition numbers must be affixed to each car: on both sides, on the doors (those need to be illuminated, according art. 5.3). In addition, a small competition number must be affixed to the right side of the upper rear window and to the right side of the upper front window.

5.1.3 If it is impossible to affix the compulsory competition number panels and race numbers as per given instructions due to the construction of the doors, an alternative fixation must be agreed with the promoter. The competition number panels may not be modified or cut without prior agreement of the promoter.

5.1.4 If a competition number gets partly or initially loose and the car cannot be identified by the timekeepers, the competitor concerned will himself be held responsible.

5.1.5 Spare numbers and advertising stickers will be available at the Welcome Centre. The competition numbers and advertising stickers are free of charge.

5.2 TRANSPONDER with or without Driver-ID

To further improve communication opportunities (e.g. for commentators) for all classes a transponder with or without a Drivers ID is obligated:

5.2.1 Valid transponders with 4 or 5 Drivers ID are:

- MYLAPS CAR DP-i transponder (previously the TranX260 DP-i transponder)
- MYLAPS X2 Transponder

5.2.2 not applicable

5.2.3 Not applicable

5.3 Not applicable

5.4 Not applicable

5.5 Not applicable

6. Ballast and Maximum Permitted Weight

6.1 Ballast

6.1.1 If the weight of the car must be completed by ballast to comply with the minimum weight as stipulated in the present

Regulations and this weight cannot be achieved by corresponding permitted modifications in or on the car (i.e. steel doors, steel roof, etc.); this ballast must be fixed inside the car as follows:

- 1) Ballast box must be according homologation (e.g. GT-cars) or TCR TECHNICAL FORM (for TCR cars)
- 2) Ballast weight must be installed according to FIA ISC appendix J
- 3) Ballast box must be as described below:

6.1.2 This ballast must during any practice, qualifying and race be fixed inside the car on the passenger's side in a metal container with the following minimum dimensions:

Bottom surface: minimum 1600 cm²

Height: 50 mm

Wall thickness: 2 mm

6.1.3 This container must be fixed on the floor panel. It must be closed with a solid, screwed cover and offer the possibility to fix seals. The weights inside the container must additionally be secured. If the cover serves to fix the weights, it must be appropriate solid, have at least four fixation points for closure and offer the possibility for seals to be affixed.

6.1.4 The container, the cover and the weights must be installed in such a way that they are capable of withstanding accelerations / decelerations of at least 25 g without any damage.

6.1.5 At least four fixing screws with a minimum of M 8 mm, 10.9 quality are compulsory. If necessary, the floor panel is to be provided with a reinforcing plate.

6.1.6 This container will be sealed every time an additional weight has to be applied. The seals must be present at any time during the event. If a seal is missing, all practice/qualifying times of the team concerned may be cancelled or the penalties laid out in the International Sporting Code may be applied.

6.2 Maximum Permitted Weight

6.2.1 If the maximum permitted weight of the car (see car registration papers or documents) is below the required minimum weight for the division/ group concerned, the car cannot be accepted.

6.2.2 This means that no car in racing condition, i.e. empty weight according to the relevant table plus fuel plus driver (75 kg according to EC standard) may exceed the weight specified for the corresponding car as maximum permitted road-legal standard weight.

6.2.3 Proof must be furnished by the competitor himself by means of documents of, the manufacturer.
General Importer.

7. Fuel tank capacity versus refuelling amount

7.1 For classes: TC, TG, GT and PX

The maximum fuel tank capacity for the following classes is 120 Litre, unless explicitly otherwise described:

7.2 The Max Refuel amount is free (under Green and during Code60)

8. Data-communication to and from car

Data-communication (e.g. Engine-data, e.g. oil-temperature) from car to pits is allowed

Data-communication (e.g. change of Engine-settings) from pits to cars is forbidden.

Normal two way radio communication to driver is allowed.

Text message to driver is also allowed.

9. Allowed modifications for classes GT, 991 and TG and TC

Unless otherwise specified in these regulations, Supplementary Regulations or bulletins, below modifications are allowed referred to the specific cup regulations, homologations and/or technical forms, for GT3's, Porsche 991 Cup, TCR cars and GT4 cars.

Item	Description
Brake pads	Brand, model type and dimensions are free
Brake discs	Brand, model type and dimensions are free
Brake cooling	<p>May be added and/or modified, with the following limitations:</p> <ul style="list-style-type: none"> Any modification or addition of brake cooling must have the clear purpose of brake cooling Only brake cooling with air is allowed (e.g. NO water or liquid cooling) The maximum of two pipes/hoses to bring the air to the brakes of each wheel is allowed. E.g. one existing pipe/hose and one added The total inner section of one or both air pipes may be maximum 227 cm². This corresponds for example to a section of 12cm in diameter for 2 equal pipes/hoses or 17cm for one single pipe/hose The use of electrical blowers/fans is allowed Modifications and/or additional holes in the front bumper (e.g. to put extra or bigger air ducts) are allowed, with following limitations: <ul style="list-style-type: none"> With the only purpose of brake cooling Total maximum of 4 holes Maximum dimension per hole 400 cm² To each hole in the front bumper, a pipe or hose must be mounted, to be directed to the brakes The modification or addition of air ducts to the brakes is allowed Front and rear brakes: protection shields may be added or modified Mounting of additional parts, with the clear purpose to improve brake cooling is allowed The pipes or any other part must not protrude over the perimeter of the car, seen from above
Headlights	See Chapter III art. 3.4
Window heater	A window heater for (de-fog reasons) is allowed
Driver ventilation-cooling	<p>For the purpose of driver ventilation-cooling the following is allowed:</p> <p>For the door and side windows: installation of air-ventilation is allowed. The side windows must be of safety glass or plastic.</p> <p>If of polycarbonate, the thickness must not be less than 3 mm.</p> <p>If of plastic, the thickness must not be less than 5 mm.</p> <p>They must in any case be transparent at discretion of scrutineering</p>
Protective-grating in front bumper	<p>For protective-grating in front bumper it is allowed to replace them by more robust protective-grating.</p> <p>Mounting of additional protective-grating in and for air-openings is allowed.</p>
Protective-grating in rear wheel arch	<p>It is allowed to install protective-grating in the rear wheel arch only in the area of the exhaust.</p> <p>The sole purpose of this modification is preventing tyre pickup coming in touch with the exhaust.</p>
Seatbelts	It is allowed to replace the original seatbelts, by FIA approved seatbelts according FIA Appendix J Art. 253.6. However the original mounting-positions must be respected.
Seat	It is allowed to replace the SEAT, by FIA-homologated SEAT.
Fuel-inlet	<p>See also art. 21.3.2 Fuel-inlet Chapter I</p> <p>For cars with the fuel-inlet on the side, it is allowed to have fuel-inlet on left and right hand side. However, during refuelling, it is NOT allowed to refuel the car on both sides simultaneously</p>

10. Technical Regulations Group "Silhouette Cars AND Sports Cars"

10.1 Eligible vehicles

The group is a group of vehicles build for racing.

There is no specific class for silhouette Cars and sports cars. Silhouette cars and sports cars will be assigned to most suitable class.

The promoter decides in which class the individual silhouette car or sports car will be assigned.

10.1.1

Apart from below explicitly described technical regulations, like weight and fuel tank capacity, all sportive & technical requirements applicable for the assigned class are also applicable for the particular silhouette car or sports car.

The intention is to admit silhouette cars to increase the variety of competing cars, which fits to the sportive character of the race and fits from performance point of view with the Touring- and GT-cars.

In interest of this sportive character each silhouette car or sports car will be accepted on individual basis. This even means that accepting one Silhouette type does not automatically mean another silhouette car or sports car of the same type is accepted.

10.1.2

For safety reasons, only solely closed silhouette cars and sports cars are generally admitted.

Also for safety reasons only cars with a minimum weight of 750kg are admitted.

No open wheels silhouette cars are accepted, so the complete wheels must be housed within the original body.

Only the promoter decides about the admission of a car and upon possible waivers.

10.1.3 Balance of Performance

The promoter has the right to compensate the performance of each car to maximize the equality of the performance. This compensation can be of any kind, e.g. add weight, limit amount of refuelling, add a restrictor, and give a time penalty and/or any other kind of compensation.

All silhouette cars have to be according following regulations.

10.2 Engine

10.2.1

Turbo coefficient does apply as per Chapter IV for petrol engines

10.2.2

Engine brand and type is free. If engine brand is different than car manufacturer, it must be declared in the entry form.

10.3 Minimum Weights

10.3.1

See Balance of Performance publication of the specific event.

10.3.2

Generally, only cars fulfilling the prescriptions of FIA ISC Appendix J Art. 277-3, will be accepted:

10.4 Fuel Tank

Note: The original tank must be replaced by a FT3-1999, FT3, 5 or an FT5 safety tank according to Article 253.14 of the Appendix J to the ISC

Provisions must be taken to prevent the leakage of fuel in all situations (including the situation of overfilling)!

10.5 Safety

- All silhouette cars must comply with the provisions of FIA International Sporting Code Appendix J art. 277 – Category II-SH
- All sports cars must comply with the provisions of FIA International Sporting Code Appendix J art. 277 – Category II-SC

The chassis (tubular frame) and safety structure of the silhouette car must be approved by the ASN and/or FIA and the origin must be mentioned.

Also the body of the silhouette car must be approved.

Also all other safety regulations are applicable as per technical prescriptions for all cars, Article 3 of chapter III

Chapter IV - Technical Regulations Group "24h-Special"

1. Eligible Vehicles

1.1 The promoter only decides upon the eligibility of the Vehicles.

In particular in cases of car models which were built in smaller units, such as Ferrari Maranello, a vehicle may be refused. Before investing in the preparation of any such vehicle, the car owner should contact the promoter regarding its eligibility.

National homologated cars may be admitted.

The promoter will decide upon possible waivers.

1.2 For safety reasons, solely closed touring cars and GT cars are generally admitted. The vehicles must have a spark ignition engine, a rotary engine (Wankel), diesel engine, electrical powered or hybrid and be of the model year 1995 or later (the last year of construction of the model of a car is decisive) running on 4 non-aligned wheels and having a minimum series height of 1.100 mm and a maximum series height of 1.600 mm. In addition, the height of the car in race version may in no case exceed this maximum height of 1.600 mm.

There is basically no limitation to cylinder capacity or number of cylinders, however to be eligible a car must fit from performance point of view. As a guideline the upper limit is restricted to GT2 cars.

The vehicle roof must be of a solid, closed structure.

Standard hard-top variants might be accepted.

Vehicles with tubular space frame may be admitted, see Art. 10 Chapter III Technical regulations for group Silhouette cars.

(A few Examples of NOT accepted cars: Caterham, Roadster, Radical, Ligier)

1.3 All cars must have mudguards which are rigidly connected to the bodywork. Consequently, co-steering mudguards are prohibited. The basic and the race car must also have a solid bodywork between the front and the rear wheels (running-in protection).

1.4 Cars with exposed wheels are not permitted.

1.5 The standard car which represents the basis for the race car must be qualified for obtaining a road licence for public traffic in Europe. In cases of doubt, the competitor must furnish proof by submitting a General Certification (ABE) or an Individual Certification (EBE) or another corresponding certificate. Solely normal registrations or licence number plates or official certifications for road homologation are accepted which can be obtained by everyone.

1.6 The series vehicle which provides the basis for the race car must have been built in at least 4 identical units. The competitor must furnish proof hereof.

1.7 Car manufacturers are accepted as manufacturers if they admitted and registered with the German Federal Motor Vehicle Registration Agency ("KBA"). For the interpretation of the present Regulations, to be accepted as a manufacturer, a minimum number of 1.000 units of a series production car (independent of the basic vehicle for the race car) must have been built and be available through the normal commercial dealer channels. The regulations in connection with the list are not affected by the provision.

1.8 Series production car: For the interpretation of the present Regulations, a series production car is a car which complies with the above mentioned provisions, amongst others in relation to the car height, production numbers, manufacturer, road licensing etc.

2. General

Anything which is not expressly authorized by the present Regulations is forbidden. Any part worn through use or accident can only be replaced by an original part identical to the damaged one. Authorized modifications may not result in forbidden modifications.

3. Engine

- 3.1** The engine (engine block, crankcase, cylinder head) must be produced by the same car manufacturer. The engine must remain inside the original engine compartment. The engine type is free. The promoter will decide upon possible waivers.
- 3.2** Supercharging is permitted if it complies with the manufacturer's production for the series production model which serves as basis for the race car. For spark ignition engines, the supercharging for the corresponding series production car must be made with spark ignition engine.
Vehicles of the same model range of a manufacturer are considered to be series production cars. The model year restrictions specified in this chapter (1995) must be respected.
- 3.3** In case of supercharging, the nominal cylinder capacity will be multiplied by 1.7 and the car will pass into the class corresponding to the cubic capacity class thus obtained.
For cars with mechanical superchargers (compressors), as for example G compressors, the factor for the cylinder capacity will be 1.4.
In both cases, if in a class the cubic capacity is mentioned as: Supercharged engines up to a specific cubic capacity, the coefficient (1.4 or 1.7) is not applicable. (e.g. in class TC)
- 3.4** The supercharging system must remain original, e.g. supercharger or compressors (Ex. Comprex and G-compressors). This means that a naturally aspirated engine must remain a naturally aspirated engine, an exhaust-gas turbocharger engine must remain an exhaust-gas turbocharger engine etc. The addition of a supercharger not complying with the original system is consequently not eligible. The make and the design of the supercharging system are free (so a Garrett supercharger can for example be replaced by a KKK supercharger and vice versa).
- 3.5** The installation of an intercooler is free.
- 3.6** The equivalence formula for rotary engines covered by NSU Wankel patents is as follows:
The equivalent cubic capacity is 1,5x the volume determined by the difference between the maximum and minimum capacities of the combustion chamber.
- 3.7** The lubrication system is free.
- 3.8** Air feed as well as auxiliary devices and radiators are free.
All vehicles must be able to refuel directly with a commercial type hose as used in usual service stations. Therefore, the refuelling opening of the tanks must allow for this operation.

4. Exhaust System

- 4.1** The orifice(s) of the exhaust pipe must be located at the rear of the car or at the car's side. The orifice of an exhaust pipe directed to the side must be located behind the centre of the wheelbase.
- 4.2** No exhaust pipe may protrude beyond the perimeter of the car's bodywork. They must be situated less than 10cm from this perimeter in relation to the external edge of the bodywork.
- 4.3** The exhaust system must be a separate component and be located outside the bodywork respectively the chassis. The exhaust system is free as for the rest.
- 4.4** Rear body apron: It is permitted to apply openings with a total surface of maximum 100cm² at the rear body apron for the purpose of the passage of the exhaust pipe orifice. The lower side of the opening must end at the lower edge of the rear body apron. Should there be original standard openings for the passage of the exhaust gas above this area, these openings are acceptable and they must not end at the lower edge of the rear body apron.

5. Transmission

5.1 Reverse gear (according Appendix J 275-9.3)

All cars must have a reverse gear which, at any time during the event, can be selected while the engine is running and used by the driver when seated normally.

5.2 Four-wheel drive is only permitted if fitted as an original equipment in the model concerned.

5.3 Clutch, final drive and all drive-train components are free.

The gearbox is free (for example sequential gearbox). The gearbox must, however, remain in its original location, for example in front of or behind the engine, at the drive axle, etc. The number of forward gears is limited to six. A reverse gear is compulsory.

All gear changes, though, must exclusively be made mechanically. Automatic or semi-automatic gearboxes, e.g. rocker type gear change, is only authorized if this operating principle complies with the original version and the standard gearbox housing is retained. Otherwise, the gear shifting must be purely mechanical.

5.4 A front wheel driven car may not be converted to a rear wheel driven car and vice versa. The original drive must be retained.

5.5 The addition of any kind of intermediate ratios is permitted.

For cars originally equipped with a permanent four-wheel drive, one driving axle may be disconnected. Differential as well as the cooler and pumps provided for these are free.

6. Wheels and Tyres

6.1 Wheel material (according Appendix J 275-12.2)

All wheels must be made from homogeneous metallic materials.

6.2 The wheels (flange + rim) are free provided that they may be housed within the original bodywork; this means the upper part of the complete wheel (tyres including the rim flange), located vertically over the wheel hub centre, must be covered by the bodywork, when measured vertically.

6.3 Wheel fixation systems are free.

6.4 In no case may the rim/tyre width, in relation to the cubic capacity or the fictive volume of the car, exceed the following values:

up to 1.400 cc: 8,5 "

over 1.400 cc up to 1.600 cc: 9,0 "

over 1.600 cc up to 2.000 cc: 10"

over 2.000 cc up to 2.500 cc: 10,5 "

over 2.500 cc up to 3.000 cc: 11,5 "

over 3.000 cc: 14,0 "

The width may be measured at any point of the rim including rim flange (not wheel disc) with the exception of the tyre contact area.

6.5 The spare wheel and its attachment parts may be removed.

7. Ground Clearance

No part of the car, with the exception of the rims and/or tyres, must touch the ground when the tyres situated on the same side of the car are deflated. In order to check this point, the air valves of the tyres on the same side of the car will be removed. The ground clearance is checked without passengers.

This test must be carried out on a relatively flat surface. It is left to the competitor's discretion to remove the tyres from the rims before the check of the ground clearance

8. Braking System

8.1 A dual-circuit brake system operated by the same pedal and having a simultaneous effect on the front and the rear wheels are compulsory. As for the rest, the braking system is free. A handbrake is recommended. Carbon fibre parts are forbidden (with the exception of brake pads).

8.2 Cooling of Brakes

Front and rear brakes: protection shields are free.

The maximum of two pipes to bring the air to the brakes of each wheel is allowed. The inner total section of one or both air pipes must not be more than 227 ccm. This corresponds for example to a section of 12 cm in diameter for 2 equal pipes or 17 cm for one single pipe.

The air pipes must not protrude over the perimeter of the car, seen from above.

9. Steering

The steering system must not act on the rear axle. As for the rest, the steering system is free but the power steering may not be installed inside the cockpit. (Exception: if serial). It is permitted to install steering angle limitations.

10. Suspension/ Shock absorbers

10.1 The shock absorbers parts are free. In the case of an oil pneumatic shock absorbers, lines and valves connected to the spheres (pneumatic parts) are free.

E.g. manual, automatic, semi-automatic and/or electronic controlled dampers or shock absorbers are allowed.

Electronic height adjustment is forbidden.

Any height adjustment which can be done from the cockpit by the driver is forbidden, as well as any other electronic/pneumatic means. Height adjustment is only allowed by the "classic" method (manual adjustment with tools by a mechanic in the pit).

10.2 Chromium plating (According to Appendix J 275-10.2 and 10.3.1)

All shock absorbers parts must be made of homogeneous metallic material and may not be chrome-plated.

10.3 Strengthening of the mounting points of shock absorbers parts on the body side, by adjunction of material, is allowed.

10.4 Anti-roll bar: Anti-roll bars may not be adjustable from the cockpit.

10.5 The shock absorbers mounting points to the body shell or the chassis may be modified.

11. Cockpit

11.1 Seats:

The passenger seats and the rear seats (including the backrest) must be removed. For driver' seat: See also Chapter III of the present Regulations.

11.2 Dashboard :

The dashboard is free but it must not have any sharp edges.

11.3 Pedal Boxes:

Pedal boxes may be installed.

11.4 Doors – Side trim:

It is permitted to remove the soundproofing material from the doors but the doors must be equipped with door trims.

This trim may be original or be made of a metal sheet with a thickness of minimum 0,5 mm or of another composite

material with a minimum thickness of 2 mm. In the case of a two-door car, the trim situated beneath the rear side

windows must also comply with the above provisions.

It is permitted to remove the interior trim from the door in order to install a side protection panel which is made from

composite material side pad (lateral protection integrated in the side protection bar). The minimum height of this panel must extend from the base of the door to the maximum height of the door strut.

It is permitted to replace electric winders with manual ones.

11.5 Floor:

Carpets are free.

11.6 Other sound proofing materials and trim:

Other padding materials may be removed.

11.7 Heating system:

The original heating system may be replaced by another one. It is permitted to remove or to blank off the water supply of the internal heating device, in order to prevent water spillage during an accident, providing an electric demist system or similar is available. The heating system may be removed partly or completely, provided that a windscreen which can be heated with electric resistance or an electrical blower is installed. The air guiding components are free. The air outlet openings must be standard parts and may not be modified. The electrically heated windscreen must be made of laminated glass with design certification and comply with the standard exterior shape.

11.8 Air-conditioning:

Air-conditioning is free.

11.9 Steering wheel:

The steering wheel is free, but it must have a constant cross-sectional, closed steering-wheel rim.

It is permitted to place adapters between the steering wheel and the steering column. These adapters may be connected or welded to the steering wheel and the steering column by means of separable fixations. The anti-theft

steering-lock device must be made inoperable. The vertical installation angle of the steering column may be modified in the area of the dashboard through the fixation of adapters.

The steering can be on either the right or left provided that it is a question of a simple inversion of the steered wheels control, laid down and supplied by the manufacturer without any other mechanical modifications except those made necessary by the inversion.

The rear removable window shelf in two-volume cars may be removed.

11.10 Air pipes:

Air pipes may only pass through the cockpit if these are intended for the ventilation of the cockpit.

11.11 Additional accessories:

All those which have no influence on the car's behaviour are allowed, for example equipment which improves the aesthetics or comfort of the car interior (lighting, radio, etc.). In no case may these accessories increase the engine power or influence the steering, transmission, brakes, or road holding not even in an indirect fashion. All controls must retain the role laid down for them by the manufacturer. They may be adapted to facilitate their use and accessibility, for example a longer handbrake lever, an additional flange on the brake pedal, etc.

11.12 The following is also allowed:

- Measuring instruments such as speedometers etc. may be installed or replaced, and possibly has different functions. The speedometer may be removed.
- The horn may be changed or an additional one added or removed.
- Circuit breakers may be freely changed vis-à-vis their use, position, or number in the case of additional accessories.
- A "fly-off" hand brake may be installed.
- Additional compartments may be added to the glove compartment and additional pockets in the doors provided they use the original panels.
- Insulating material may be added to the existing bulkhead to protect the passengers from fire.
- The washer system is free but there must be the minimum of 1 windscreen wiper provided for the windscreen.

Unused supports may be removed, e.g. seat supports, etc.

12. Electrical System

12.1 The nominal voltage of the electrical system including that of the supply circuit of the ignition must be retained. The addition of relays and fuses to the electrical circuit is allowed as is the lengthening or addition of electric cables.

Electric cables and their sleeves are free.

12.2 The make and capacity of the batteries are free. Each battery must be securely fixed and covered to avoid any short-circuiting or leaks. The number of batteries laid down by the manufacturer must be retained. Should the battery be moved from its original position, it must be attached to the body using a metal seat and two metal clamps with an insulating covering, fixed to the floor by bolts and nuts.

For attaching these clamps, bolts with a diameter of at least 10 mm must be used, and under each bolt, a counter plate at least 3 mm thick and with a surface of at least 20 cm² beneath the metal of the bodywork.

12.3 If a wet battery is used, the battery must be covered by a leak proof plastic box, attached independently of the battery. Its location is free, however if in the cockpit it will only be possible behind the front seats. In this case, the protection box must include an air ventilation pipe with its exit outside the cockpit.

12.4 Fuses:
The fuses in the electrical circuit and the fuse carriers are free.

12.5 Lighting - Indicating:

All lighting and signalling devices must comply with the legal requirements or with the International Convention on Road Traffic.

The operating system of the retractable headlights, as well as its energy source, may be modified.

The frontal glass may be covered with a clear transparent film.

Lighting equipment (according Appendix J art. 259-8.4.1 – 8.4.3)

All lighting equipment must be in working order throughout the competition, even if the competition is run entirely in daylight.

All cars must be fitted with two red stop lights and two red rear lights. They must be located symmetrically on either side of the longitudinal axis of the car and must be mounted in a visible position.

For night races, all cars must be fitted with at least two headlights, and with direction indicators mounted at the front and rear of the vehicle (with side indicators mounted to the rear of the front wheel axle).

13. Fuel Tanks

13.1 According Appendix J art. 14. the fuel tank must be a FIA approved safety fuel tank homologated by the FIA (specification FT3-1999, FT3.5 or FT5-1999).

The number of tanks is free and the FIA approved safety fuel tank(s) must be placed inside the luggage compartment* or in the original location (Exception: see Art. 13.5 of this chapter).

The total fuel capacity may not exceed the limit corresponding to each of the classes.

*A luggage compartment of a car is defined as a (luggage) compartment which is separated from the cockpit, by a fluid-proof separation as from the original serial production car. (See Art.251 of the Appendix J)

Exception to the above may be made if the car is based on a production road model and was built by the manufacturer or the manufacturer's agent as a race car e.g. Cup Cars or Challenge Cars and this can be verified via valid documentation which must satisfy the Chief scrutineer.

In this instance the car must have the original fuel tank and lines fitted.

13.2 Tank fillers and caps (acc. Appendix J 259-6.4.1 – 6.4.3):

All filler and vent caps must be designed to ensure an efficient locking action which reduces the risks of accidental opening following a crash impact or incomplete closing after refueling.

The tank fillers, vents and caps must not protrude beyond the bodywork.

The tank fillers, vents and breathers must be placed where they are not vulnerable in the event of an accident.

13.3 The construction of collector tanks with a capacity of less than 1 litre is free.

13.4 It is possible to fit a radiator in the fuel circuit with a maximum capacity one litre.

13.5 The accommodation of the fuel tank inside the cockpit is authorized provided that the following prescriptions are respected:

- All fuel tanks must be placed behind the front edge of the standard rear seat bench or heel plate.(exceptions to this rule, at strict discretion of scrutineering).
- All fuel tanks must be FT3-1999, FT3, 5 or FT5 safety tanks.
- Attachment to the bodywork with the least 40mm wide and 2mm thick metal straps, two times longitudinal and once transverse to the car's longitudinal axis. The straps must be positioned around the box. Alternatively, a fixation to the bottom of the box with at least 10 M8 screws or 16 M6 screws is possible.
- A liquid proof bulkhead or box must be made of CFRP, GFK, metal or honeycomb sandwich construction.
- A sandwich construction must have a minimum thickness of 10 mm and a fire-proof core with a deformation resistance of at least 18 N/cm² (24lb/in²). Aramid fibre is permitted. The sandwich construction must have two skins with a thickness of 1.5 mm each and a tensile strength or at least 225 N/mm² (14 tons).
- If not a sandwich construction is used, a shock absorbing foam with a thickness of at least 15 mm and a liquid tightness of at least 35 kg/m³ must be provided between the attached box and the fuel tank
- The fuel tank must always be refilled from the exterior.
- All fuel lines must comply with the current prescriptions as specified in Article 253-3.2 (FIA-ISC)
- All fuel lines situated inside the cockpit must be continuous (not in pieces).
- The tank filler may be placed at an appropriate location of the bodywork with the exception of the roof.
- Fuel tank filler in rear side window is allowed
The filler hose must be flexible (i.e. rubber) and have two walls.
- The name of the manufacturer and the date of manufacture must be visible. Alternatively, the badge provided by the tank manufacturer and belonging to the tank must be placed at a visible location.
- A non-return valve must be installed on the filler hose.
- The main tube of the rollover structure must have two diagonal members (cross members) or equivalent tubes.
- Fuel pumps must be separated from the cockpit by a bulkhead (box).

13.6 The obligation for 15mm foam or cross members in the rollover structure is only applicable if the fuel tank (tank including filler hose) is totally or partly located inside the cockpit or the theoretic cockpit (for two-volume cars). Otherwise, the fuel tank must be located in the luggage compartment or in its original standard position.

13.7 For the sole purpose of the fixation of the tank filler neck, the rear side windows may be replaced by windows made of polycarbonate with a minimum thickness of 5 mm or by another fuel proof suitable material with a minimum thickness of 5 mm. Design and position must comply with the original rear side windows.

The filler position (filler neck) for refuelling must not be situated in the roof.

Furthermore, refuelling through the luggage compartment is permitted.

If the filler neck is fitted inside the boot lid or hatchback, the filler neck must not be rigidly connected to the lid or hatchback. If the filler neck is fitted inside the hatchback, it must be positioned below the upper edge of the rear window.

14. Bodywork

14.1 The total width of the bodywork may not exceed 205 cm (without mirrors). Unless wider homologated.

14.2 Front and rear spoilers are free, provided that the following prescriptions are respected for non-standard or non-FIA homologated devices:

- Aerodynamic devices must be added to the original exterior bodywork and may not fundamentally modify the exterior original shape of the bodywork.
- Front aerodynamic devices may not protrude by more than 20 cm to the front over the outmost edge of the original bodywork.
- Rear aerodynamic devices may not protrude by more than 40 cm to the rear over the utmost edge of the original bodywork.
- The front spoiler width is limited to the dimension between the outer points of the front mudguards.
- The width of the complete rear spoiler including end plates is limited to the dimension between the outer points of the rear mudguards. The rear spoiler must be provided with end plates each one of which may have a maximum dimension of 400 mm x 250 mm and a minimum thickness of 10 mm. The end plates must not have any sharp edges.
The rear spoiler may have maximum two flaps which must be completely located between the two end plates. The flaps may be adjustable in steps but not be continuously adjustable and not whilst the car is moving.
- The rear spoiler (rear wing), including wing end plates may not be higher than 20cm above the roof of the car.
- Standard spoilers may be removed.

14.3 The floor assembly and the rear apron (exceptions mentioned in this chapter) must comply with the original version. Panels or aerodynamic devices may be fixed to the floor assembly.

14.4 Two openings may be applied in the bulkhead each between the engine compartment and the cockpit and between the luggage compartment and the cockpit to allow the passage of pipes. The maximum diameter for each opening is 50 mm. After the passage of the pipes, the possibly remaining openings must be closed.

14.5 Doors, Engine Bonnet, Boot Lid and Roof:

The material used for the doors, for the bonnet the boot lid and roof is free, provided that the exterior original shape and the original door locks remain unchanged.

The kind of the fastening devices (no hinges) for the bonnet and the boot lid is free. If the material or fastening devices for the bonnet or the boot lid is not the original material, two additional safety fasteners securing the bonnet must be fixed on each bonnet. Such fasteners are recommended in any case.

The maximum of one opening (Naca duct) with the maximum dimensions of 200 x 300 mm may be applied in the bonnet cover but it must not protrude to the outside of the engine cover. It must however be designed in a way to

prevent the view onto any mechanical components. The relief possibly resulting from the opening must be covered by a fine-meshed grid (mesh width: maximum 5 x 5 mm) which re-establishes the original form.

The airbox is free.

It must in any case be possible to replace the modified doors and bonnets by the original ones.

14.6 Mudguards:

Material and design of the mudguards is free. The design of the wheel openings – not their dimensions – must however remain original.

The mudguards must cover at least 1/3 of the wheel circumference and at least the total tyre width. It is permitted to provide the mudguards with openings for cooling. Air inlets located behind the rear wheels in the wheel cover must be designed so that the tyres are not visible in horizontal plane.

The dimensions of the mudguards are defined in Art. 251.2.5.7 of the Appendix J.

The interior of the mudguards is free (not the wheelhouse), where mechanical components may be applied.

Sharp edged bodywork parts in the area of the wheel arch which might damage the tyres or other rotating parts may be folded back.

The plastic soundproofing parts may be partly or completely removed from the interior of the wheel passages. These plastic elements may be partly or completely changed for other elements of the same shape.

Original wheel arch openings may be closed partly or completely provided that the original wheel arch contour respectively the basic shape remains original.

14.7 Wheel arch/ Inner wing panel

Wheel arches/inner wing panels delivered by the car manufacturers or their sports department are authorized, provided that the minimum of four bodyworks in this configuration were factory produced. A Motor Vehicle Construction and Use Regulations admission is not relevant for this purpose. The competitor must furnish proof in cases of doubt.

14.8 Unused supports which do not have any influence on the bodywork rigidity may be removed on the complete bodywork (interior and exterior). Only those supports which are exclusively screwed may be completely removed.

14.9 Reinforcement of transversal struts

Transversal struts between identical axle pivot points on the right and the left may be installed on the upper, lower, front and rear side but they must be removable and be screwed to the mounting points of the shock absorbers or in its vicinity; on the upper side, three bores may in addition be applied on each side.

15. Glass Surfaces and Material

15.1 The original surfaces of the side windows must be retained. Sliding windows are permitted. The fixation of the windows and the operating mechanism of the side windows are free.
It is permitted to install ventilation systems into the side windows for better ventilation.

Windscreen and windows (According to Appendix J 279-2.4)

The windscreen must be of laminated glass or of a polycarbonate,

If a windscreen made of polycarbonate is used the thickness must not be less than 5mm and it must be in good condition at any time during the event. At discretion of scrutineering.

The windows must be of safety glass or polycarbonate.

If of polycarbonate, the thickness must not be less than 3 mm.

If of plastic, the thickness must not be less than 5 mm.

They must in any case be transparent. Only the rear window may be tinted, e.g. with foil.

Cars with laminated windscreens which are damaged to such an extent that visibility is seriously impaired or that there is a likelihood of their breaking further during the competition, will be rejected.

Films, stickers and spraying are not allowed, except those authorised by the promoter.

Synthetic screens must not be tinted. Tinted glass screens, e.g. heat shield screens, are only permitted if they are original for this car.

The fitting of an additional windscreen washer tank or of one with a greater capacity is authorised. This tank must be strictly reserved for the cleaning of the windscreen.

15.2 It is not permitted to position connectors for pneumatic jacks or similar in the windows.
For the sole purpose of the fixation of the tank filler neck, the rear side windows may be replaced by windows made of polycarbonate with a minimum thickness of 5 mm or by another fuel proof suitable material with a minimum thickness of 5 mm. Design and position must comply with the original rear side windows,

16. Safety Regulations

16.1 Non-return valve

A FIA homologated non-return valve must be installed in the filler hose of the fuel tank.

16.2 Bulkhead

A fire and liquid proof bulkhead must be installed between the fuel tank and the cockpit.

Appendix 1 – **Class TC**: Technical Regulations

1. **Applicable Technical regulations:**

- Chapter III of these regulations (Technical regulations for all cars)
- Chapter IV of these regulations (Technical regulations group "24H Special")
Below specific regulations for Class TC

2. **Eligible Cars**

- Petrol Touring Cars: at discretion of the promoter
- Diesel Touring Cars: at discretion of the Promoter

The performance guideline for class TC is: Cars that are slower than class TG

For Diesel cars the turbo charging coefficient will not apply.

2.1 **Eligibility guideline**

Generally, the following car groups, based on their cylinder capacity, are eligible in class TC. The promoter reserves the right to accept or refuse any other car, if the performance parameters fit. As a guideline, the following cars are eligible:

- Touring cars up to 2000cc
- Touring cars, supercharged up to 1600cc
- BMW 240i Racing CUP (only on condition, the car is according to BMW Cup regulations. If NOT, the car is eligible in class **TG**)

3. **For Diesel cars: Exhaust Gases, Smoke Formation**

High exhaust-emission levels and smoke/root emission are prohibited.

The Race Director has the right to signal, by showing the black flag with orange disc, a car producing more smoke than normal in the exhaust system to come to the pits in order to carry out an appropriate repair.

For any DIESEL car, it is mandatory to install the following:

- Catalytic converter
- Particle Filter (e.g. HJS)

4.1. **Balance of Performance**

4.1 In case a car has an unreasonable advantage or disadvantage compared to other cars as a result of type of engine and/or special chassis qualities and or track conditions and or due to driver line-up, the promoter has the right to compensate the performance of each car to maximize the equality of the performance. Also the promoter has the right to refuse a (too professional) driver line-up.

This compensation can be of any kind, e.g. higher or lower minimum weight and restrictor. Such a balance of performance measure can be applied at any moment during the entire event, any practice, qualifying and during the race.

Appendix 2 Not applicable

Appendix 3 – **Class TG**: Technical Regulations

1. **Applicable Technical regulations:**

- Chapter III of these regulations (Technical regulations for all cars)
- Below specific regulations for Class TG

2. **Eligible Cars**

2.1 TCR-certified cars: Touring Cars, Supercharged, basically 2017 and younger

2.2 GT4 Homologated cars

2.3 Special Touring cars and some GT-cars:

- with approximately the performance of TCR cars.
- Guide-line is approx.: 3,5-4,0kg/hp

3. **Technical regulations TCR cars:**

3.1 The specific technical TCR regulations are applicable:

3.2 All cars with an official TCR TECHNICAL FORM are eligible. The promoter reserves the right to accept waivers.

3.3 The latest version of the TCR International Series: Technical Regulations (including existing bulletins) are applicable with the following exceptions/additional regulations

Item	Description
General items	See chapter III, art.9
Tyres	The tyre brand is shown in the sporting regulations. The tyre size (slick and Rain-tyres): The Hankook type-specification may be maximum 260/660/R18. The number of tires is not restricted.
Exhaust / Silencers	The Exhaust must be basically according TCR Technical form. It is allowed to install silencers to comply with the noise regulations Please note: under all circumstances the applicable noise measures need to be within the specified limits!
Shock absorbers	Brand, model and type of shock absorbers need to be according to the TECHNICAL FORM of the car. Alternatively, shock absorbers supplied and manufactured by Tractive Suspension are allowed to be used, this includes: <ul style="list-style-type: none"> • Tractive standard (manually adjustable) shock absorbers • Tractive automatic, semi-automatic and/or electronic controlled dampers or shock absorbers • See www.24HSERIES.com for more information
Quick (dry) brake line connectors	It is allowed to use any quick (dry) brake lines connectors in the brake system.
Fuel tank ventilation hose	It is allowed to replace the original fuel tank ventilation hose by a hose which is of the same diameter and type (fuel resistance) and with a length of maximum 400mm longer than the original hose. The longer hose is meant to be mounted above the (endurance) fuel-inlet, to avoid fuel spoiling.

3.4 The Sporting regulations for TCR Class are the same as for any other class.

3.5 **Balance of performance**

The promoter will decide on balance of performance, which will be published in the Supplementary Regulations/BOP publications of the specific event.

3.6 **Weight**

Minimum weight: is without driver and empty fuel tank.

24H SERIES

3.7 Ride height

Unless explicitly described otherwise in these regulations or the Supplementary Regulations, the minimum ride height of the whole car's bottom area must be respected.

Items such as wheel-supports and exhaust are not taken into account at ride height checks.

Ride height will be measured:

- Without driver
- At tyre pressure of 2,0 bar

4. Technical regulations GT4 cars:

4.1 As this is a specific class for the GT4 cars, different than other classes, the specific technical GT4 regulations are applicable:

4.2 All cars with complying with an official GT4-homologation, approved by the RACB/SRO are eligible. The promoter reserves the right to accept waivers.

4.3 The latest version of the GT4 Technical Regulations (including existing bulletins) are applicable with the following exceptions/additional regulations

Item	Description
General exceptions	See chapter III, art. 9 of these regulations
Tyres	The tyre brand is shown in the sporting regulations. The number of tires is not restricted.
Shock absorbers	Brand, model and type of shock absorbers and springs are free, according to chapter IV of these regulations. Automatic, semi-automatic and/or electronic controlled dampers or shock absorbers are only allowed if described in the homologation.
Exhaust/Silencers	The exhaust must be according to the homologation of the specific car It is allowed to install silencers to comply with the noise regulations In case complying with the noise regulations requires additional modifications, this may be accepted at discretion of scrutineering

4.4 The Sporting regulations for GT4 cars are the same as for any other class.

4.5 Modified GT4 cars may be accepted in this class, at discretion of the promoter and on written request.

4.6 Balance of performance

The promoter will decide on balance of performance, which will be published in the balance of performance of the specific event. E.g.:

4.7 Weight

Minimum weight: is without driver and empty fuel tank.

4.8 Ride height

The ride height is free.

5. Technical regulations Special Touring cars and some GT-cars:

5.1 Approximately the performance of TCR cars.

Guide-line is approx.: 3,5-4,0kg/hp

5.2 Chapter III of these regulations (Technical regulations for all cars)
Chapter IV of these regulations (Technical regulations group "24H Special")

Appendix 4 - Not applicable

Appendix 5 – Not applicable

Appendix 6 – Not applicable

Appendix 7 – Not applicable

Appendix 8 – Not applicable



Appendix 9 – Class 991 Technical Regulations

1. Applicable Technical regulations:

- Chapter III of these regulations (Technical regulations for all cars)
- Below specific regulations for Class 991

2. Eligible Cars

2.1 Eligible models and clarification: 991-I versus 991-II

- 991-I: (may be written as 991-I)
When is mentioned 991 it must be read as:
Porsche 911 GT3 Cup (type 991-I),
according Porsche Carrera Cup Deutschland regulations, see art. 4 of this chapter
(year of build: MY 2014-2015-2016)
- 991-II:
When is mentioned 991-II it must be read as:
Porsche 911 GT3 Cup (type 991-II),
according "Porsche Carrera Cup Deutschland" regulations: see art. 4 of this chapter
(year of build: MY 2017-2018-2019-2020-2021)

Other Porsche models might be accepted (in other classes) on individual basis.

Modified Porsche Cup cars (991-I or 991-II) might be accepted and assigned to **GT**, at discretion of the promoter. A copy Car passport, Wagenpass and/or any other relevant technical documentation, must be provided on request.

2.2 Older Porsche Cup models

Explicit other Porsche models or types, e.g. Porsche 997, Porsche Cup S, 997 RS, 997 Cup R or 997 RSR are not accepted in class 991.

Porsche 997 Cup will be assigned to class 991.

Porsche 997 Cup R and 997 Cup S will be assigned to class 991.

2.3 The promoter alone decides on the eligibility of the individual vehicles and upon possible waivers.

3. not applicable

4. Technical regulations Class 991

4.1 For Porsche 991-I Cup cars

As this is a specific class for the Porsche 911 GT3 Type 991-I cars, different than other classes, the following specific technical regulations apply:

- "Porsche Carrera Cup Deutschland" 2014 / 2015 / 2016
(latest version, including technical bulletins)
For model 2014 "Porsche Carrera Cup Deutschland 2014, for model 2015 "Porsche Carrera Cup 2015, etc.
- Additions and exceptions mentioned in this Appendix

4.2 For Porsche 991-II Cup cars

As this is a specific class for the Porsche 911 GT3 Type 991-II cars, different than other classes, the following specific technical regulations apply:

- "Porsche Carrera Cup Deutschland" 2017 / 2018 / 2019 / 2020
(latest version, including technical bulletins)
For model 2017 "Porsche Carrera Cup Deutschland 2017, for model 2018 "Porsche Carrera Cup 2018, etc.
- Additions and exceptions mentioned in this Appendix

5. Modifications for type 991-I and 991-II:

5.1 For general modifications allowed, see chapter III art.9

5.2 For type 991-I it is allowed to use original parts of younger year of build of type 991-I.

5.3 For type 991-II it is allowed to use original parts of younger year of build of type 991-II.

5.4 Porsche 911 GT3 Cup cars with „GrandAm-Roll Cage“ will be accepted on condition a DMSB-certificate is available.

6. Deviations and additional regulations for type 991-I and 991-II

6.1 Minimum weight of the car according to the balance of performance publication of the specific event

- This is the weight is without driver and with empty fuel tank.
- The promoter has the right to amend the minimum weight during the season.

6.2 BASIC TECHNICAL APPROVAL

- At the first participation, a basic check of each car will be carried out by scrutineering.
- The organiser has the right to secure the Engine ECU and/or the engine, for verification by Porsche/Bosch or any other specialist.

6.3 Tyres

For all above Porsche Cup Cars, the tyres must be Hankook, according these Sporting Regulations. The number of tires is not restricted.

For all Porsche 991-I Cup and Porsche 991-II Cup, the tyre size is restricted to the following Hankook tyres:

Slick Tyres

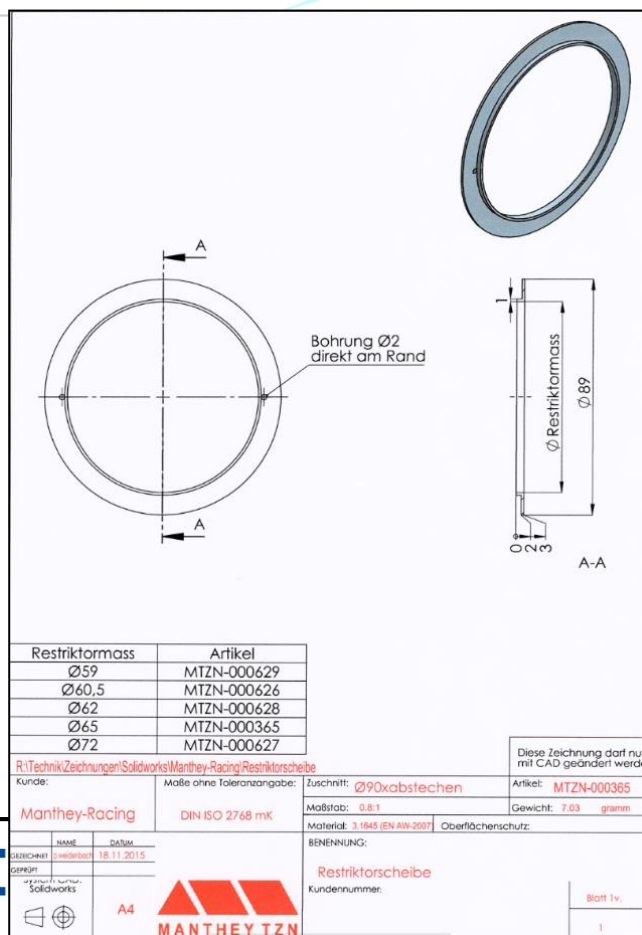
- 6 Front: 280/660R18 F200
- 7 Rear: 320/710R18 F200

Rain Tyres

- Front: 280/660R18 Z207
- Rear: 320/710R18 Z207

6.4 Specifications Restrictor-Blende

If applicable: The restrictor-blende (dimension is described in the BOP-publication of the specific event) needs to be according to the specifications as described in the following image:



24H SERIES

6.5 Other deviations

Shock absorbers	Brand, model and type of shock absorbers and springs are free, according to chapter IV of these regulations Automatic, semi-automatic and/or electronic controlled dampers or shock absorbers are only allowed if described in the homologation/Porsche Carrera Cup Technical regulations.
------------------------	---

7. Exceptions and Notes for Porsche 911 GT3 Cup Typ 991-I and 991-II

7.1 Allowed alternatives modifications: as described in Chapter III
Other allowed alternatives/modifications are described below

7.2 The following "VLN Areo Kit" parts are allowed (only allowed if used completely)

- Gurney 10 mm Height
- Spoilers on the front left and front right:

Porsche 911 GT3 Cup	Flick left / right	Gurney (10mm)
Type 991-I	991.505.935.8A / 991.505.936.8A	991.512.991.8C
Type 991-II	MTH 505711 / MTH 505712	991.512.991.8C

7.3 Ride height

For Porsche 991-I Cup: Free
For Porsche 991-II Cup: Free

7.4 Opening in bonnet:

All vehicles must be able to refuel directly with a commercial type hose as used in usual service stations. Therefore, the refuelling orifices of the tanks must be equipped for this operation.
(see art. 21.3 Fuel / Refuelling of chapter I)

It is allowed to make an opening in the bonnet, with maximum size of 400 cm², to refuel the car. So the car can be refuelled without opening the bonnet.

7.5 Fuel tank and filler neck with safety overflow

7.5.1 Fuel tank according Carrera Cup regulations (100L)

7.5.2 Fuel filler neck with safety overflow

- If the filler neck is fitted inside the luggage compartment, the filler neck must not be connected to the lid and must have free access from outside without opening the boot lid.
- The filler neck must be provided with a sufficiently large collar with an overflow pipe or tube which must be directed towards the outside of the luggage compartment.
- See picture with example.



7.5.3 Fuel tank modifications

Following fuel tank modifications are allowed, as long as the maximum fuel capacity remains 100 L:

- Catch tank is free
- Fuel pumps are free
- Fuel level sensor is free

7.6 Exhaust

The exhaust, AFTER the Manifold/Catalyst (Katalysator/krümmer), is free.
Up to and including the Manifold/Catalyst, the original exhaust of Carrera Cups is obligatory.
Please note: under all circumstances the applicable noise measures need to be within the specified limits!

7.7 Clutch is free

7.8 Paddle shift is free

7.9 Gearbox ratio is free

7.10 ABS System is allowed, brand and type is free

7.11 Drive shafts are free

7.12 Wheels/Rims:

Porsche 991-I Cup and Porsche 991-II Cup

- Sizes must be according Porsche Carrera Cup regulations:
 - Front: 10.5J x 18 ET 28
 - Rear: 12J x 18 ET 53
- Manufacturer is free
- It is not allowed to extend the width of the car

7.13 Brakes

- Allowed alternatives/modifications, see chapter III art. 9
- Brake calliper: Brand, model, type, dimensions and number of pistons is free
- Although Brake calliper is free, quick (dry) release of brake lines is NOT allowed

7.14 Oil Quick Refill

Oil Quick Refill (Öl-Schnellbefüllung) is allowed*

Including the related hole in the engine bonnet, to refill oil. (equal to Porsche 911 GT3 R)

*Only the Oil Quick Refill system of Porsche (911 GT3 Cup special parts) is allowed (alternative parts are allowed)

7.15 Wheel housing:

Using parts 9915042138A (left) & 9915042148A (right) is allowed. (To avoid rubber from the tyres to get in contact with the exhaust)

24H SERIES

8. Exceptions for Porsche 911 GT3 Cup Typ 991-I only

8.1 The piston diameter of the Master Brake Cylinder is free.

8.2 Optional (allowed) parts for 911 GT3 Cup Typ 991-I only

8.2.1 150 A Alternator (Lichtmaschine)

1 x 997.603.019.8A Z Alternator (Drehstromgenerator) 1 x 997.603.531.8A Bracket (Halter) Generator
1 x 900.385.042.01 6RD-SHR M8X35 10.9
1 x 900.385.001.01 6RD-SHR M8X20 8.8
1 x 900.385.274.01 6RD-SHR M10X25 10.9
1 x 999.513.075.40 Cable Ties (Kabelbinder)
1 x 900.385.148.01 6RD-SHR M10X55 10.9
1 x 900.377.011.01 6KT-MU M10

8.2.2 Gear-system (Schaltssystem) „Megaline“

1 x 991.618.355.8A Z Compressor circuit (Kompressor Schaltung)
1 x 991.605.310.8E Slave cylinder Transmission (Nehmerzylinder Getriebe)
1 x 991.618.485.8E Z Air pipe valve block + Compr. (Luftleitung Ventilblock+Kompr.)
1 x 991.618.785.8E Air pipe (Luftleitung)
1 x 991.618.471.8B Valve Block (Ventilblock)
1 x 991.618.795.8B Bracket Valve Block (Halter Ventilblock)
4 x 999.703.193.01 Dämpfelem. 15x15/ M5
4 x 900.817.005.02 6KT-MU M5
4 x 999.073.268.09 LI-SHR M5X12
1 x 991.618.765.8A Adapterkabel Ventilblock
4 x 996.355.857.9A Mantle (Hülse)
4 x 999.073.270.A2 LI-SHR M5X20

8.2.3 The following Porsche parts are also allowed to be used:

991.575.333.8A AS00 Brake Cooling Part
991.575.334.8A AS00 Brake Cooling Part
997.102.041.93 Fly Wheel

9. Weight

9.1 The minimum weight, see BOP publication of the specific event.

Appendix 10 – Class GT: Technical Regulations

1. Applicable Technical regulations:

- Chapter III of these regulations (Technical regulations for all cars)
- Chapter IV of these regulations (Technical regulations group "24H Special")
- Below specific regulations for Class GT

Silhouette cars may be accepted in this class. For these cars, the additional technical prescriptions of Chapter III, art. 10 apply.

2. Eligible Cars

2.1 Group specials cars, is a group of cars which is added to accept a wider variety of cars.

This class is basically meant for GT cars which fits from performance point of view.

2.2 GT3 Homologated cars

This class is basically meant for GT cars which fits from performance point of view.

3. Technical regulations Group special cars:

3.1 Guide-line is approx.: 2,5-3,4kg/hp (for example: faster than GT4 and slower than GT3)

3.2 Silhouette cars may be accepted in this class. For these cars, the additional technical prescriptions of Chapter III, art. 10 apply.

3.3 Only the promoter decides about the admission of a car and upon possible waivers.

3.4 By participating in class GT and in case the car will be (by incident) too fast at discretion of the Race Director the team will accept and cooperate with any type of balance of performance.

3.3. Balance of Performance

3.3.1 In case a car has an unreasonable advantage or disadvantage compared to other cars as a result of type of engine and/or special chassis qualities and or track conditions and or due to driver line-up, the promoter has the right to compensate the performance of each car to maximize the equality of the performance. Also the promoter has the right to refuse a (too professional) driver line-up.

This compensation can be of any kind, e.g. higher or lower minimum weight and restrictor. Such a balance of performance measure can be applied at any moment during the entire event, any practice, qualifying and during the race.

24H SERIES

4. Technical regulations Class GT3

4.1 not applicable

4.2 Modifications

4.2.1 Modifications/deviations referring to the homologation which do clearly NOT have any influence on the (lap time) performance are generally allowed. (e.g. driver/cockpit ventilation or fuel level indicator).

4.2.2 Modifications which might have a positive influence on the (lap time) performance are forbidden.
In case an GT3 car has modifications which might have a positive influence on the (lap time) performance, this car might be refused.

4.2.3 The following modifications, which might or will have a positive influence on the performance are allowed:

Item	Description
General Items	See Chapter III art.9
Drive shafts	Free
Differential	Free
Gearbox	Gearbox and gearbox ratio are free, including paddle shift is free
Flat bottom	Flat bottom is free
Ride height	Ride height is free, unless explicitly otherwise mentioned.
Wheels/Rims	Wheels/Rims inclusive wheel nuts are free (e.g. manufacturer, type, weight) Rim sizes must be according the homologation It is not allowed to extend the width of the car
Mudguards	Ventilation holes (e.g. Louvre's) in the mudguards are free
Exhaust	Brand, type and modifications are free. Please note: under all circumstances the applicable noise measures need to be within the specified limits!
Window net	Only for GT3-FIA-homologated cars with FIA racing net 8863-2013 acc. homologation: The window-Nascar-net (see Chapter III art. 3.1) is NOT required. An arm restraint is strongly advised
Shock absorbers	Brand, model and type of shock absorbers and springs are free, according to chapter IV of these regulations. Automatic, semi-automatic and/or electronic controlled dampers or shock absorbers are only allowed if described in the homologation.

5. Performance and Balance of Performance (BOP)

5.1 The promoter reserves the right to apply also different or additional method of balance of performance, in this case this will be described in the BOP-Publication of the specific event.

5.2 In case an accepted car will be (by incident) too fast (on decision of the Race Director) they will accept and cooperate with any type of balance of performance at any time of the event.

5.3 not applicable

5.4 not applicable

5.5 Engine intake and Air Restrictors

Unless in the balance of performance publication the restrictor is described as FIA-restrictor-design*, the restrictor must be according following restrictor specifications:

*FIA-restrictor-design

Must be interpreted as: The engine intake restrictor(s) must be according FIA-specifications/drawings.

5.5.1 Restrictor specifications:

The engine intake system must be provided with one or two air restrictors (restrictor).

They must have a minimum length of 3 mm and a maximum diameter complying with: See BOP-Publication of the specific event.

(Besides this the shape and design is free)

The use of a FIA restrictor is obligatory if not described otherwise in the Supplementary Regulations.

The restrictors must be made of a metallic material.

The diameter specified in the balance of performance publication may at no time be higher than indicated, regardless of the temperature conditions.

When opening the engine bonnet, the restrictors must be completely visible without having to remove additional covers.

All the air necessary for feeding the engine must pass through this restrictor.

Behind the restrictor/s no kind of air containing ducts is permitted in the intake system.

The scrutineers must be able to seal all restrictors with a wire which makes a dismantling impossible.

For naturally aspirated engines, the restrictor/s is/are paired with the intake system (air box).

For supercharged engines, the restrictor/s is/are paired with the turbo charger.

For supercharged engines, the restrictor/s must be fitted at a maximum distance 300 mm in front of the compressor wheel of the turbo charger. (or as per homologation)

The closing of the restrictor/s must immediately stop the engine. This test is carried out at a speed of 2500 rpm. All the pressure sensors in the intake system must be closed for this test. The pressure measured during this test in the intake system must be at least 150 mbar under the on-site existing ambient pressure and be maintained over at least 0.5 seconds.

A measurement connection on the intake system must be made available for the promoter upon request.

The organiser reserves the right to modify the restrictor sizes for individual cars at any time of the event.

5.5.2 Restrictor – Test Punch

At any time during the event and at scrutineering, competitors with a car which is subject to the restrictor provisions must make available 2 test punches to check the restrictors.

One test punch must comply with the real restrictor size and the second test punch diameter must be 0.1mm smaller than the real restrictor size. A measuring tolerance of -0.02mm is allowed. Before inserting the test punch into the air restrictor, it must have a temperature of +/- 10° Celsius in relation to the ambient temperature.

Each team is solely responsible for the correctness of the test punches.

5.6 Weight, fuel tank and balance of performance

5.6.1 The minimum weight, the fuel tank and possibly other balance of performance figures of the table of Class GT3 in the balance of performance publication of the specific event are applicable.

The Race Director reserves the right to modify those figures for individual cars at any time of the event.

5.7 Balance of performance ballast weight

Balance of performance (BOP) ballast weight instructions:

In case a BOP for your car would be applicable, your team need to be prepared to add a maximum weight of 75kg.

Additional to the mounting requirements in the present regulations it is also allowed to mount according FIA-regulations appendix J Art.257A or Art.258.

This 75kg and the way of mounting and sealing need to be shown and approved at scrutineering.

Appendix 11 – Class PX: Technical Regulations

1. **Applicable Technical regulations:**
 - Chapter III of these regulations (Technical regulations for all cars)
 - Below specific regulations for Class PX

2. **Eligible Cars**
 - Production sports cars, FIA group CN, according: FIA Appendix J Art. 259 of ISC
 - Prototype cars, according: FIA Appendix J Art. 277 Category II-SC of ISC
(e.g. Wolf GB08, Ligier JS P3, Ligier JS 51, etc.)

